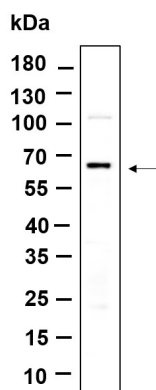


| | |
|--------------------------|---------------------------------------------------------------------------------------------------------------------------------------------------------------------------------------------------------------------------------------------------------------|
| Product name: | PINK1 Rabbit Monoclonal Antibody |
| Cat number: | MAB301386 |
| Conjugate: | Unconjugated |
| Size: | 100 ug |
| Clone: | D8G3 |
| Concentration: | 1 mg/ml |
| Host: | Rabbit |
| Isotype: | IgG, κ |
| Immunogen: | Recombinant Human PINK1 protein |
| Reactivity: | Human, Mouse, Rat |
| Applications: | Western Blot 1:1000-1:2000 Immunofluorescence: 1:200-1:500 Immunoprecipitation: 1:50-1:200 ELISA: 1:5000-1:20000 |
| Molecular Weight: | 63 kDa |
| Purification: | Protein A |
| Form: | Liquid |
| Buffer: | PBS, 50% glycerol, 0.05% Proclin 300, 0.05% protein protectant. |
| Storage: | Store at -20°C Valid for 12 months. Avoid freeze / thaw cycles. |
| Synonyms: | PINK, PARK, PTEN induced putative kinase, PINK1, BRPK, PARK6, PTEN induced putative kinase 1 |
| Background: | This gene encodes a serine/threonine protein kinase that localizes to mitochondria. It is thought to protect cells from stress-induced mitochondrial dysfunction. Mutations in this gene cause one form of autosomal recessive early-onset Parkinson disease. |

For Research Use Only

IMMUNOLOGICAL SCIENCES

Web-site: <https://immunologicalsciences.com> - E-mail: info@immunologicalsciences.com



Western Blot with Recombinant PINK1
Monoclonal Antibody at dilution of
1:1000 dilution. LaneA: HeLa lysate.