

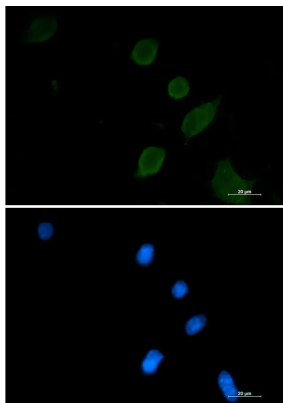


<b>Product name:</b>	Synaptophysin Rabbit Monoclonal antibody
<b>Cat number:</b>	MABN02655
<b>Conjugate:</b>	Unconjugated
<b>Size:</b>	100µL
<b>Concentration:</b>	1mg/ml
<b>Host:</b>	Rabbit
<b>Isotype:</b>	IgG
<b>Immunogen:</b>	A synthetic peptide of human Synaptophysin
<b>Reactivity:</b>	Human,Rat
<b>Applications:</b>	WB 1:500-1:1000,IHC 1:50-1:100,ICC/IF 1:50-1:200
<b>Molecular Weight:</b>	38 kDa
<b>Purification:</b>	Affinity purification
<b>Form:</b>	liquid
<b>Buffer:</b>	50mM Tris-Glycine(pH 7.4), 0.15M NaCl, 40% Glycerol, 0.01% Sodium azide and 0.05% protective protein
<b>Storage:</b>	Store at 4°C short term. Aliquot and store at -20°C long term. Avoid freeze/thaw cycles.
<b>Synonyms:</b>	SYP; Synaptophysin; Major synaptic vesicle protein p38
<b>Source:</b>	Rabbit
<b>Background:</b>	SYP Possibly involved in structural functions as organizing other membrane components or in targeting the vesicles to the plasma membrane. Involved in the regulation of short-term and long-term synaptic plasticity. Belongs to the synaptophysin/synaptobrevin family. Homohexamer or homotetramer. Note: This description may include information from UniProtKB.

**For Research Use Only**

**IMMUNOLOGICAL SCIENCES**

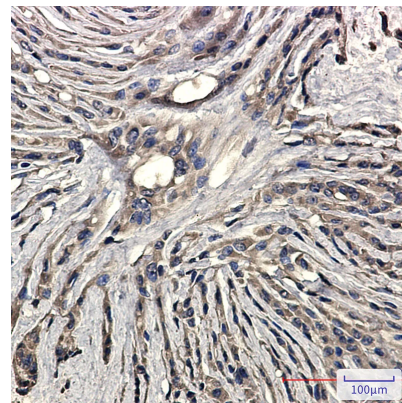
Web-site: <https://immunologicalsciences.com> - E-mail: [info@immunologicalsciences.com](mailto:info@immunologicalsciences.com)



Immunocytochemistry analysis of Synaptophysin (green) in 3T3 using Synaptophysin antibody, and DAPI (blue).



Western blot analysis of Synaptophysin in rat Brain lysates using Synaptophysin antibody.



Immunohistochemistry analysis of paraffin-embedded Human Brain using Synaptophysin antibody. High-pressure and temperature Sodium Citrate pH 6.0 was used for antigen retrieval.

**For Research Use Only**

**IMMUNOLOGICAL SCIENCES**

Web-site: <https://immunologicalsciences.com> - E-mail: [info@immunologicalsciences.com](mailto:info@immunologicalsciences.com)