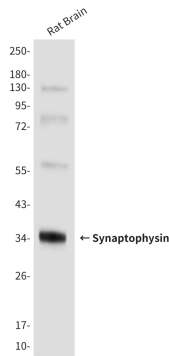


Product name:	Synaptophysin (10C8) Mouse Monoclonal Antibody
Cat number:	MABN03573
Conjugate:	Unconjugated
Size:	100ul
Clone:	10C8
Concentration:	1mg/ml
Host:	Mouse
Isotype:	IgG1
Immunogen:	A synthetic peptide of human Synaptophysin
Reactivity:	Human,Mouse,Rat
Applications:	WB 1:500-1:1000,IHC 1:50-1:100
Molecular Weight:	34 kDa
Purification:	Affinity purification
Form:	liquid
Buffer:	Liquid in PBS containing 50% glycerol, 0.5% protective protein and 0.02% sodium azide, pH 7.3.
Storage:	Store at 4°C short term. Aliquot and store at -20°C long term. Avoid freeze/thaw cycles.
Synonyms:	SYP; Synaptophysin; Major synaptic vesicle protein p38
Source:	Mouse
Background:	SYP Possibly involved in structural functions as organizing other membrane components or in targeting the vesicles to the plasma membrane. Involved in the regulation of short-term and long-term synaptic plasticity. Belongs to the synaptophysin/synaptobrevin family. Homohexamer or homotetramer. Note: This description may include information from UniProtKB.

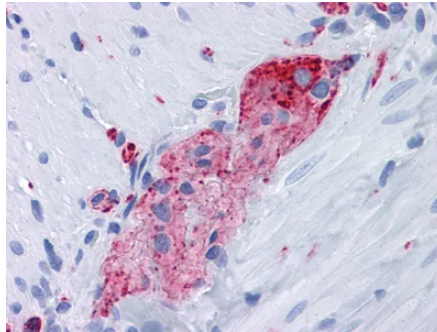
For Research Use Only

IMMUNOLOGICAL SCIENCES

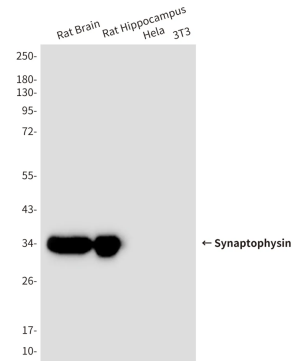
Web-site: <https://immunologicalsciences.com> - E-mail: info@immunologicalsciences.com



Western blot analysis of Synaptophysin (10C8) in rat brain lysates using Synaptophysin (10C8) antibody.



Immunohistochemical analysis of paraffin-embedded Human tonsils using Synaptophysin (10C8) antibody. High-pressure and temperature Sodium Citrate pH 6.0 was used for antigen retrieval.



Western blot analysis of Synaptophysin (10C8) in rat Brain, rat Hippocampus, Hela, 3T3 lysates using Synaptophysin (10C8) antibody