

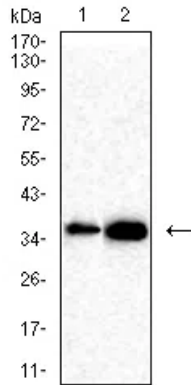


<b>Product name:</b>	SOX2 Mouse Monoclonal Antibody
<b>Cat number:</b>	MABN80930
<b>Conjugate:</b>	Unconjugated
<b>Size:</b>	100ul
<b>Concentration:</b>	1mg/ml
<b>Host:</b>	Mouse
<b>Isotype:</b>	Mouse IgG1
<b>Immunogen:</b>	Purified recombinant fragment of human SOX2 expressed in E. Coli.
<b>Reactivity:</b>	Human,Mouse,Rat,Rabbit,Monkey
<b>Applications:</b>	WB 1:500-1:1000,IHC 1:200-1:1000,ICC 1:200-1:1000,ELISA 1:5000-1:20000,FC 1:200-1:400
<b>Molecular Weight:</b>	34kDa
<b>Purification:</b>	Affinity purification
<b>Form:</b>	liquid
<b>Buffer:</b>	Purified antibody in PBS with 0.05% sodium azide.
<b>Storage:</b>	Store at 4°C short term. Aliquot and store at -20°C long term. Avoid freeze/thaw cycles.
<b>Synonyms:</b>	ANOP3; MCOPS3
<b>Source:</b>	Mouse
<b>Background:</b>	This intronless gene encodes a member of the SRY-related HMG-box (SOX) family of transcription factors involved in the regulation of embryonic development and in the determination of cell fate. The product of this gene is required for stem-cell maintenance in the central nervous system, and also regulates gene expression in the stomach. Mutations in this gene have been associated with optic nerve hypoplasia and with syndromic microphthalmia, a severe form of structural eye malformation. This gene lies within an intron of another gene called SOX2 overlapping transcript (SOX2OT).

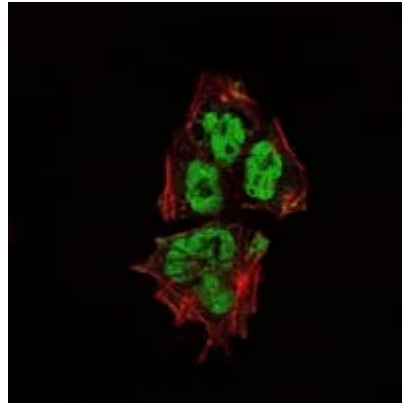
**For Research Use Only**

**IMMUNOLOGICAL SCIENCES**

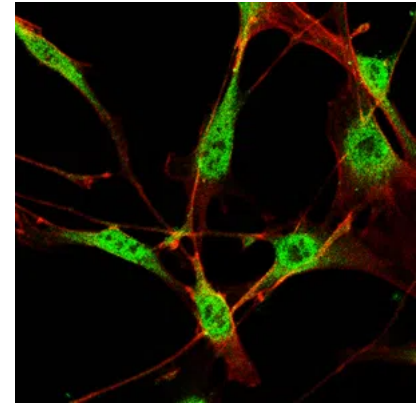
Web-site: <https://immunologicalsciences.com> - E-mail: [info@immunologicalsciences.com](mailto:info@immunologicalsciences.com)



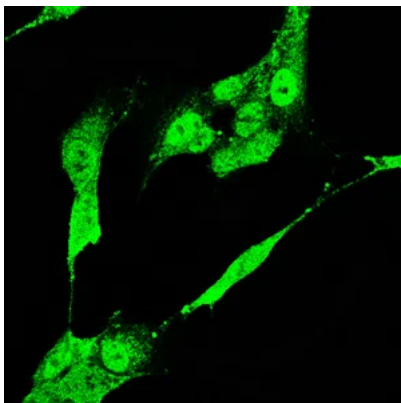
Western blot analysis using SOX2 mouse mAb against C6(1),F9(2) cell lysate.



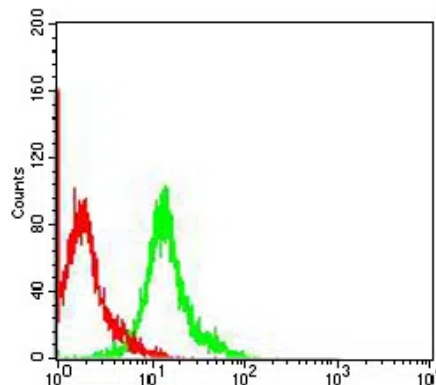
Immunofluorescence analysis of NTERA-2 cells using SOX2 mouse mAb (green). Red: Actin filaments have been labeled with Alexa Fluor-555 phalloidin.



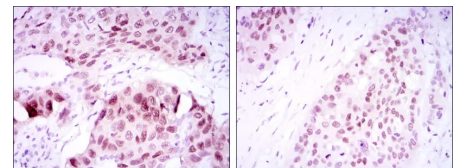
Immunofluorescence analysis of NIH3T3 cells using SOX2 mouse mAb (green). Red: Actin filaments have been labeled with Alexa Fluor-555 phalloidin.



Immunofluorescence analysis of C6 cells using SOX2 mouse mAb (green)

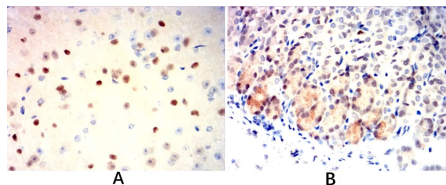


Flow cytometric analysis of COS7 cells using SOX2 mouse mAb (green) and negative control (red).

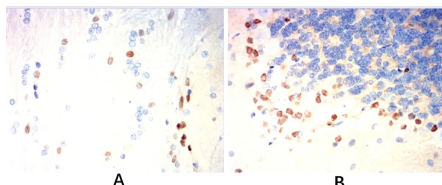


Immunohistochemical analysis of paraffin-embedded human lung cancer tissues (left) and esophageal cancer tissues (right) using SOX2 mouse mAb with DAB staining.

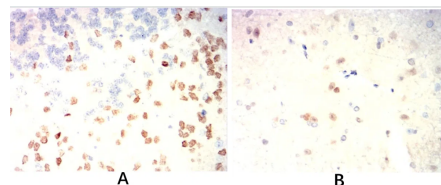
**For Research Use Only**  
**IMMUNOLOGICAL SCIENCES**



Immunohistochemical analysis of paraffin-embedded Mouse brain(A) Mouse stomach(B) using SOX2 mouse mAb with DAB staining.



Immunohistochemical analysis of paraffin-embedded Rat brain(A) Rat cerebellum(B) using SOX2 mouse mAb with DAB staining.



Immunohistochemical analysis of paraffin-embedded Rabbit cerebellum(A) Rabbit spinal cord(B) using SOX2 mouse mAb with DAB staining.

**For Research Use Only**

**IMMUNOLOGICAL SCIENCES**

Web-site: <https://immunologicalsciences.com> - E-mail: [info@immunologicalsciences.com](mailto:info@immunologicalsciences.com)