

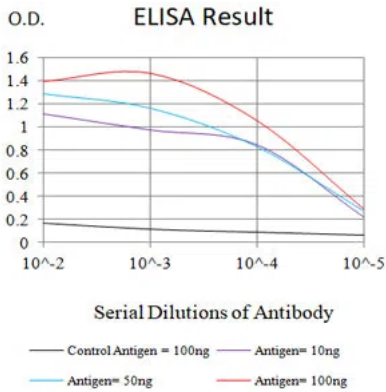


<b>Product name:</b>	NEFL Mouse Monoclonal Antibody
<b>Cat number:</b>	MABN82586
<b>Conjugate:</b>	Unconjugated
<b>Size:</b>	100ul
<b>Concentration:</b>	1mg/ml
<b>Host:</b>	Mouse
<b>Isotype:</b>	Mouse IgG1
<b>Immunogen:</b>	Purified recombinant fragment of human NEFL (AA: 1-200) expressed in E. Coli.
<b>Reactivity:</b>	Human,Mouse,Rat,Rabbit
<b>Applications:</b>	WB 1:500-1:2000,IHC 1:100-1:500,ELISA 1:5000-1:20000,FC 1:200-1:400
<b>Molecular Weight:</b>	5kDa
<b>Purification:</b>	Affinity purification
<b>Form:</b>	liquid
<b>Buffer:</b>	Purified antibody in PBS with 0.05% sodium azide
<b>Storage:</b>	Store at 4°C short term. Aliquot and store at -20°C long term. Avoid freeze/thaw cycles.
<b>Synonyms:</b>	NFL; NF-L; NF68; CMT1F; CMT2E; CMTDIG; PPP1R110
<b>Source:</b>	Mouse
<b>Background:</b>	Neurofilaments are type IV intermediate filament heteropolymers composed of light, medium, and heavy chains. Neurofilaments comprise the axoskeleton and they functionally maintain the neuronal caliber. They may also play a role in intracellular transport to axons and dendrites. This gene encodes the light chain neurofilament protein. Mutations in this gene cause Charcot-Marie-Tooth disease types 1F (CMT1F) and 2E (CMT2E), disorders of the peripheral nervous system that are characterized by distinct neuropathies. A pseudogene has been identified on chromosome Y. [provided by RefSeq, Oct 2008]

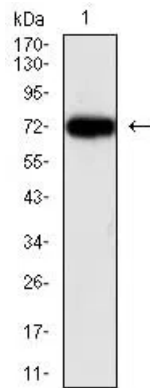
**For Research Use Only**

**IMMUNOLOGICAL SCIENCES**

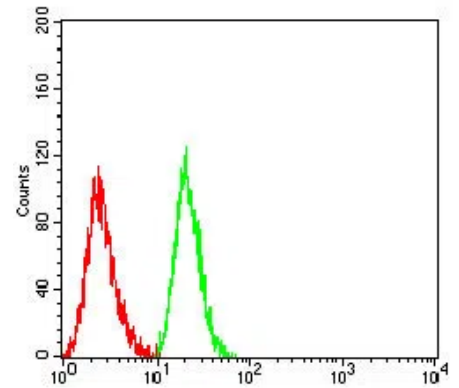
Web-site: <https://immunologicalsciences.com> - E-mail: [info@immunologicalsciences.com](mailto:info@immunologicalsciences.com)



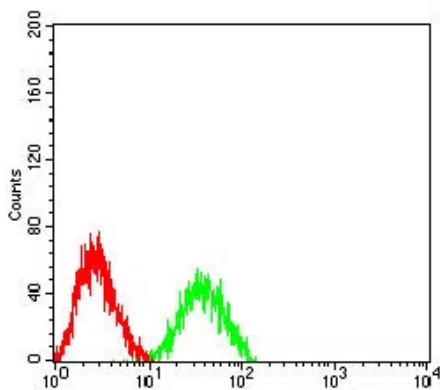
Black line: Control Antigen (100 ng); Purple line: Antigen (10ng); Blue line: Antigen (50 ng); Red line:Antigen (100 ng)



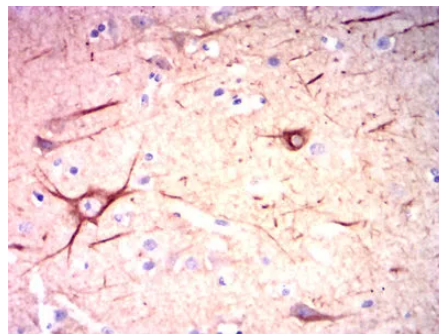
Western blot analysis using NEFL mouse mAb against HEK293 (1) cell lysate.



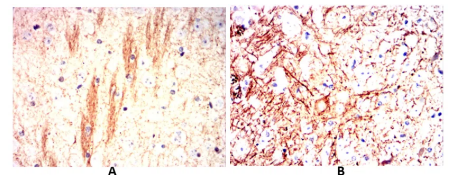
Flow cytometric analysis of Jurkat cells using NEFL mouse mAb (green) and negative control (red).



Flow cytometric analysis of SK-N-SH cells using NEFL mouse mAb (green) and negative control (red).

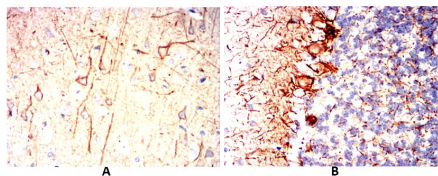


Immunohistochemical analysis of paraffin-embedded human brain tissues using NEFL mouse mAb with DAB staining.

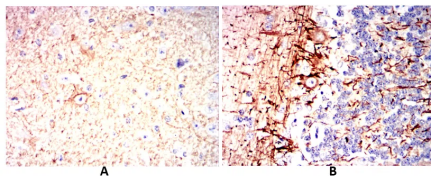


Immunohistochemical analysis of paraffin-embedded human esophageal cancer tissues using NEFL mouse mAb with DAB staining.

**For Research Use Only**  
**IMMUNOLOGICAL SCIENCES**



Immunohistochemical analysis of paraffin-embedded Mouse brain(A) Mouse cerebellum(B) using NEFL mouse mAb with DAB staining.



Immunohistochemical analysis of paraffin-embedded Rat brain(A) Rat cerebellum(B) using NEFL mouse mAb with DAB staining.

**For Research Use Only**

**IMMUNOLOGICAL SCIENCES**