

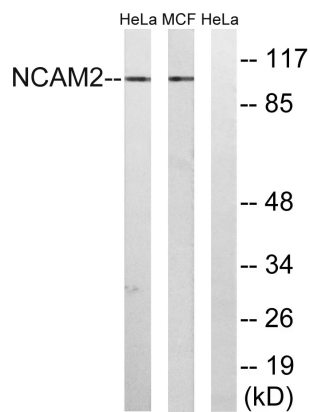


<b>Product name:</b>	NCAM2 Rabbit Polyclonal Antibody
<b>Cat number:</b>	ABN14437
<b>Conjugate:</b>	Unconjugated
<b>Size:</b>	100ul
<b>Clone:</b>	POLY
<b>Concentration:</b>	1mg/ml
<b>Host:</b>	Rabbit
<b>Isotype:</b>	IgG
<b>Immunogen:</b>	The antiserum was produced against synthesized peptide derived from human NCAM2. AA range:264-313
<b>Reactivity:</b>	Human,Mouse,Rat
<b>Applications:</b>	WB 1:500-1:2000,IHC 1:50-1:300
<b>Molecular Weight:</b>	100kDa
<b>Purification:</b>	Affinity purification
<b>Form:</b>	liquid
<b>Buffer:</b>	Liquid in PBS containing 50% glycerol, 0.5% protective protein and 0.02% New type preservative N.
<b>Storage:</b>	Store at 4°C short term. Aliquot and store at -20°C long term. Avoid freeze/thaw cycles.
<b>Synonyms:</b>	NCAM2; NCAM21; Neural cell adhesion molecule 2; N-CAM-2; NCAM-2
<b>Source:</b>	Rabbit
<b>Background:</b>	The protein encoded by this gene belongs to the immunoglobulin superfamily. It is a type I membrane protein and may function in selective fasciculation and zone-to-zone projection of the primary olfactory axons. [provided by RefSeq, Jul 2008],function:May play important roles in selective fasciculation and zone-to-zone projection of the primary olfactory axons.,similarity:Contains 2 fibronectin type-III domains.,similarity:Contains 5 Ig-like C2-type (immunoglobulin-like) domains.,tissue specificity:Expressed most strongly in adult and fetal brain.,

**For Research Use Only**

**IMMUNOLOGICAL SCIENCES**

Web-site: <https://immunologicalsciences.com> - E-mail: [info@immunologicalsciences.com](mailto:info@immunologicalsciences.com)



Western blot analysis of lysates from MCF-7 and HeLa cells, using NCAM2 Antibody. The lane on the right is blocked with the synthesized peptide.

**For Research Use Only**

**IMMUNOLOGICAL SCIENCES**

Web-site: <https://immunologicalsciences.com> - E-mail: [info@immunologicalsciences.com](mailto:info@immunologicalsciences.com)