

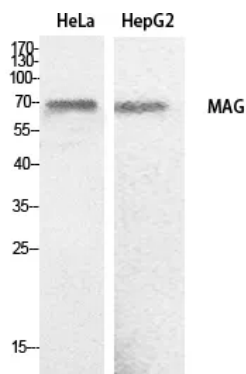


Product name:	MAG Rabbit Polyclonal Antibody
Cat number:	ABN13566
Conjugate:	Unconjugated
Size:	100ul
Clone:	POLY
Concentration:	1mg/ml
Host:	Rabbit
Isotype:	IgG
Immunogen:	The antiserum was produced against synthesized peptide derived from the C-terminal region of human MAG. AA range:501-550
Reactivity:	Human,Mouse,Rat
Applications:	WB 1:500-1:2000,ELISA 1:10000-1:20000
Molecular Weight:	70kDa
Purification:	Affinity purification
Form:	liquid
Buffer:	Liquid in PBS containing 50% glycerol, 0.5% protective protein and 0.02% New type preservative N.
Storage:	Store at 4°C short term. Aliquot and store at -20°C long term. Avoid freeze/thaw cycles.
Synonyms:	MAG; GMA; Myelin-associated glycoprotein; Siglec-4a
Source:	Rabbit
Background:	The protein encoded by this gene is a type I membrane protein and member of the immunoglobulin superfamily. It is thought to be involved in the process of myelination. It is a lectin that binds to sialylated glycoconjugates and mediates certain myelin-neuron cell-cell interactions. Three alternatively spliced transcripts encoding different isoforms have been described for this gene. [provided by RefSeq, Nov 2010],function:Adhesion molecule in postnatal neural development that mediates sialic-acid dependent cell-cell interactions between neuronal and myelinating cells. Preferentially binds to alpha-2,3-linked sialic acid.,online information:Siglec-4,similarity:Belongs to the immunoglobulin superfamily. SIGLEC (sialic acid binding Ig-like lectin) family.,similarity:Contains 1 Ig-like V-type (immunoglobulin-like) domain.,similarity:Contains 4 Ig-like C2-type (immunoglobulin-like) domains.,subunit:Binds to RTN4R.,

For Research Use Only

IMMUNOLOGICAL SCIENCES

Web-site: <https://immunologicalsciences.com> - E-mail: info@immunologicalsciences.com



Western Blot analysis of HeLa, HepG2 cells using MAG Polyclonal Antibody. Secondary antibody was diluted at 1:20000