

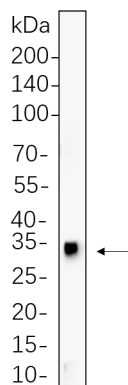


<b>Product name:</b>	HES1 Rabbit Monoclonal Antibody
<b>Cat number:</b>	MABN21016
<b>Conjugate:</b>	Unconjugated
<b>Size:</b>	100ul
<b>Concentration:</b>	1mg/ml
<b>Host:</b>	Rabbit
<b>Isotype:</b>	IgG,Kappa
<b>Immunogen:</b>	A synthetic peptide of human Hes1
<b>Reactivity:</b>	Human,Mouse,Rat
<b>Applications:</b>	WB 1:2000-1:10000,IHC 1:4000-1:20000,ICC/IF 1:200-1:1000,ELISA 1:5000-1:20000,IP 1:50-1:200
<b>Molecular Weight:</b>	Calculated MW:30kD;Observed MW:30kD
<b>Purification:</b>	Affinity purification
<b>Form:</b>	liquid
<b>Buffer:</b>	PBS, 50% glycerol, 0.05% Proclin 300, 0.05%protective protein
<b>Storage:</b>	Store at 4°C short term. Aliquot and store at -20°C long term. Avoid freeze/thaw cycles.
<b>Synonyms:</b>	BHLHB39 HL HRY
<b>Source:</b>	Rabbit
<b>Background:</b>	Cell localization:Nucleus..This protein belongs to the basic helix-loop-helix family of transcription factors. It is a transcriptional repressor of genes that require a bHLH protein for their transcription. The protein has a particular type of basic domain that contains a helix interrupting protein that binds to the N-box rather than the canonical E-box. [provided by RefSeq, Jul 2008],

**For Research Use Only**

**IMMUNOLOGICAL SCIENCES**

Web-site: <https://immunologicalsciences.com> - E-mail: [info@immunologicalsciences.com](mailto:info@immunologicalsciences.com)



C6 cell lysates were separated by 4-20% SDS-PAGE, and the membrane was blotted with HES1 Rabbit Monoclonal Antibody 1:1000. The HRP-conjugated Goat anti-Rabbit IgG(H + L) antibody was used to detect the antibody.

**For Research Use Only**

**IMMUNOLOGICAL SCIENCES**

Web-site: <https://immunologicalsciences.com> - E-mail: [info@immunologicalsciences.com](mailto:info@immunologicalsciences.com)