



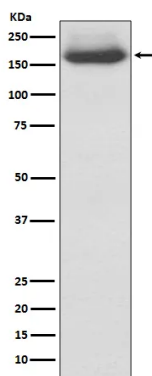
---

<b>Product name:</b>	NEFM (5A2) Rabbit Monoclonal Antibody
<b>Cat number:</b>	MABN14543
<b>Conjugate:</b>	Unconjugated
<b>Size:</b>	100ul
<b>Clone:</b>	5A2
<b>Concentration:</b>	1mg/ml
<b>Host:</b>	Rabbit
<b>Isotype:</b>	IgG
<b>Immunogen:</b>	A synthetic peptide corresponding to target protein
<b>Reactivity:</b>	Human
<b>Applications:</b>	WB 1:1000-1:2000,IHC 1:100-1:200,ICC/IF 1:50-1:200,IP 1:20-1:50
<b>Molecular Weight:</b>	102kDa
<b>Purification:</b>	Affinity purification
<b>Form:</b>	Liquid
<b>Buffer:</b>	Rabbit IgG in phosphate buffered saline , pH 7.4, 150mM NaCl, 0.02% New type preservative N and 50% glycerol. Store at +4°C short term. Store at -20°C long term. Avoid freeze / thaw cycle.
<b>Storage:</b>	Store at 4°C short term. Aliquot and store at -20°C long term. Avoid freeze/thaw cycles.
<b>Synonyms:</b>	150kDa medium; NEF3; NEFM; Neurofilament 3; NF160; NFM;
<b>Source:</b>	Rabbit
<b>Background:</b>	Integrins are heterodimers composed of noncovalently associated transmembrane $\alpha$ and $\beta$ subunits. The 16 $\alpha$ and 8 $\beta$ subunits heterodimerize to produce more than 20 different receptors. Antibodies to this protein are useful to identify neurons and their processes in tissue sections and in tissue culture. Neurofilaments usually contain three intermediate filament proteins: NEFL, NEFM, and NEFH which are involved in the maintenance of neuronal caliber. May additionally cooperate with the neuronal intermediate filament proteins PRPH and INA to form neuronal filamentous networks (By similarity).

**For Research Use Only**

**IMMUNOLOGICAL SCIENCES**

Web-site: <https://immunologicalsciences.com> - E-mail: [info@immunologicalsciences.com](mailto:info@immunologicalsciences.com)



Western blot analysis of NEFM expression in 293T cell lysate.