

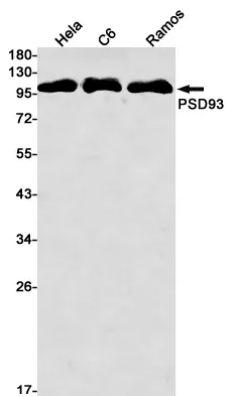


<b>Product name:</b>	PSD93 Rabbit Monoclonal antibody
<b>Cat number:</b>	MABN03167
<b>Conjugate:</b>	Unconjugated
<b>Size:</b>	100ul
<b>Concentration:</b>	1mg/ml
<b>Host:</b>	Rabbit
<b>Isotype:</b>	IgG
<b>Immunogen:</b>	A synthetic peptide of human PSD93
<b>Reactivity:</b>	Human,Rat
<b>Applications:</b>	WB 1:500-1:1000,IP 1:20-1:50
<b>Molecular Weight:</b>	110 kDa
<b>Purification:</b>	Affinity purification
<b>Form:</b>	liquid
<b>Buffer:</b>	50mM Tris-Glycine(pH 7.4), 0.15M NaCl, 40% Glycerol, 0.01% Sodium azide and 0.05% protective protein
<b>Storage:</b>	Store at 4°C short term. Aliquot and store at -20°C long term. Avoid freeze/thaw cycles.
<b>Synonyms:</b>	DLG2; Disks large homolog 2; Channel-associated protein of synapse-110; Chapsyn-110; Postsynaptic density protein PSD-93
<b>Source:</b>	Rabbit
<b>Background:</b>	Required for perception of chronic pain through NMDA receptor signaling. Regulates surface expression of NMDA receptors in dorsal horn neurons of the spinal cord. Interacts with the cytoplasmic tail of NMDA receptor subunits as well as inward rectifying potassium channels.

**For Research Use Only**

**IMMUNOLOGICAL SCIENCES**

Web-site: <https://immunologicalsciences.com> - E-mail: [info@immunologicalsciences.com](mailto:info@immunologicalsciences.com)



Western blot analysis of PSD93 in HeLa, C6, Ramos lysates using PSD93 antibody.