

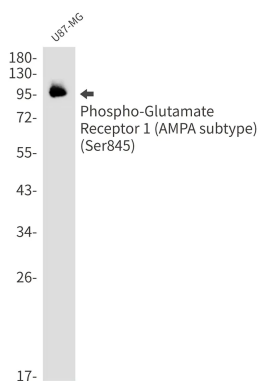


<b>Product name:</b>	Phospho-Glutamate Receptor 1 (AMPA Subtype) (Ser845) Rabbit Monoclonal Antibody
<b>Cat number:</b>	MABN01642
<b>Conjugate:</b>	Unconjugated
<b>Size:</b>	100ul
<b>Concentration:</b>	1mg/ml
<b>Host:</b>	Rabbit
<b>Isotype:</b>	IgG
<b>Immunogen:</b>	A synthetic Phosphorylated peptide corresponding to residues target protein
<b>Reactivity:</b>	Human,Rat
<b>Applications:</b>	WB 1:500-1:1000
<b>Molecular Weight:</b>	102 kDa
<b>Purification:</b>	Affinity purification
<b>Form:</b>	liquid
<b>Buffer:</b>	50mM Tris-Glycine(pH 7.4), 0.15M NaCl, 40% Glycerol, 0.01% Sodium azide and 0.05% protective protein
<b>Storage:</b>	Store at 4°C short term. Aliquot and store at -20°C long term. Avoid freeze/thaw cycles.
<b>Synonyms:</b>	GRIA1; GLUH1; GLUR1; Glutamate receptor 1; GluR-1; AMPA-selective glutamate receptor 1; GluR-A; GluR-K1; Glutamate receptor ionotropic; AMPA 1; GluA1
<b>Source:</b>	Rabbit
<b>Background:</b>	AMPA- ( $\alpha$ -amino-3-hydroxy-5-methyl-4-isoxazolepropionic acid), kainate-, and NMDA- (N-methyl-D-aspartate) receptors are the three main families of ionotropic glutamate-gated ion channels. AMPA receptors (AMPA receptors) are comprised of four subunits (GluR 1-4), which assemble as homo- or hetero-tetramers to mediate the majority of fast excitatory transmissions in the central nervous system. AMPARs are implicated in synapse formation, stabilization, and plasticity.

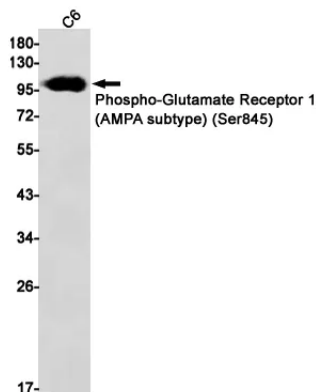
**For Research Use Only**

**IMMUNOLOGICAL SCIENCES**

Web-site: <https://immunologicalsciences.com> - E-mail: [info@immunologicalsciences.com](mailto:info@immunologicalsciences.com)



Western blot analysis of Phospho-Glutamate Receptor 1 (AMPA subtype) (Ser845) in U87-MG lysates using Phospho-Glutamate Receptor 1 (AMPA Subtype) (Ser845) antibody.



Western blot analysis of Phospho-Glutamate Receptor 1 (AMPA subtype) (Ser845) in C6 lysates using Phospho-Glutamate Receptor 1 (AMPA subtype) (Ser845) antibody.

**For Research Use Only**

**IMMUNOLOGICAL SCIENCES**