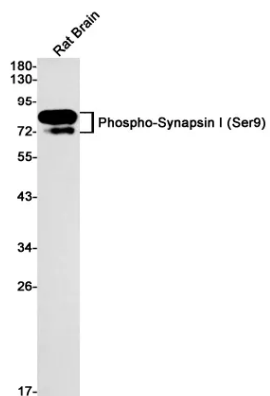


<b>Product name:</b>	Phospho-Synapsin I (Ser9) Rabbit Monoclonal Antibody
<b>Cat number:</b>	MABN01536
<b>Conjugate:</b>	Unconjugated
<b>Size:</b>	100ul
<b>Concentration:</b>	1mg/ml
<b>Host:</b>	Rabbit
<b>Isotype:</b>	IgG
<b>Immunogen:</b>	A synthetic Phosphorylated peptide corresponding to residues target protein
<b>Reactivity:</b>	Human,Rat
<b>Applications:</b>	WB 1:500-1:1000,IHC 1:50-1:100
<b>Molecular Weight:</b>	77 kDa
<b>Purification:</b>	Affinity purification
<b>Form:</b>	liquid
<b>Buffer:</b>	50mM Tris-Glycine(pH 7.4), 0.15M NaCl, 40% Glycerol, 0.01% Sodium azide and 0.05% protective protein
<b>Storage:</b>	Store at 4°C short term. Aliquot and store at -20°C long term. Avoid freeze/thaw cycles.
<b>Synonyms:</b>	SYN1; Synapsin-1; Brain protein 4.1; Synapsin I
<b>Source:</b>	Rabbit
<b>Background:</b>	This gene is a member of the synapsin gene family. Synapsins encode neuronal phosphoproteins which associate with the cytoplasmic surface of synaptic vesicles. Family members are characterized by common protein domains, and they are implicated in synaptogenesis and the modulation of neurotransmitter release, suggesting a potential role in several neuropsychiatric diseases.

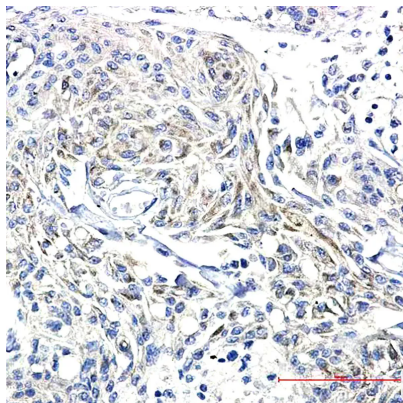
**For Research Use Only**

**IMMUNOLOGICAL SCIENCES**

Web-site: <https://immunologicalsciences.com> - E-mail: [info@immunologicalsciences.com](mailto:info@immunologicalsciences.com)



Western blot analysis of Phospho-Synapsin I (Ser9) in rat Brain lysates using Phospho-Synapsin I (Ser9) antibody.



Immunohistochemistry analysis of paraffin-embedded Human Brain using Synapsin I (Phospho- S9) antibody. High-pressure and temperature Sodium Citrate pH 6.0 was used for antigen retrieval.

**For Research Use Only**

**IMMUNOLOGICAL SCIENCES**