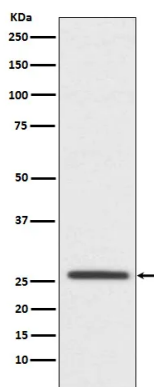


Product name:	Claudin 11 (15R12) Rabbit Monoclonal Antibody
Cat number:	MABN08891
Conjugate:	Unconjugated
Size:	100ul
Clone:	15R12
Concentration:	1mg/ml
Host:	Rabbit
Isotype:	IgG
Immunogen:	A synthetic peptide of human Oligodendrocyte Specific Protein
Reactivity:	Human,Mouse,Rat
Applications:	WB 1:1000-1:5000,FC 1:100-1:500
Molecular Weight:	22kDa
Purification:	Affinity purification
Form:	Liquid
Buffer:	Rabbit IgG in phosphate buffered saline , pH 7.4, 150mM NaCl, 0.02% New type preservative N and 50% glycerol. Store at +4°C short term. Store at -20°C long term. Avoid freeze / thaw cycle.
Storage:	Store at 4°C short term. Aliquot and store at -20°C long term. Avoid freeze/thaw cycles.
Synonyms:	Claudin 11; CLD11_HUMAN; Cldn11; OSP; OTM;
Source:	Rabbit
Background:	Plays a major role in tight junction-specific obliteration of the intercellular space, through calcium-independent cell-adhesion activity. Plays a major role in tight junction-specific obliteration of the intercellular space, through calcium-independent cell-adhesion activity.

For Research Use Only

IMMUNOLOGICAL SCIENCES

Web-site: <https://immunologicalsciences.com> - E-mail: info@immunologicalsciences.com



Western blot analysis of
Oligodendrocyte Specific Protein
expression in SH-SY5Y cell lysate.

For Research Use Only
IMMUNOLOGICAL SCIENCES