



Product name:	Phospho-alpha Synuclein (S129) (15T7) Rabbit Monoclonal Antibody
Cat number:	MABN05849
Conjugate:	Unconjugated
Size:	100ul
Clone:	S129
Concentration:	1mg/ml
Host:	Rabbit
Isotype:	IgG
Immunogen:	Ser129 of human alpha Synuclein
Reactivity:	Human,Mouse,Rat
Applications:	WB 1:1000-1:5000,IHC 1:200-1:500
Molecular Weight:	14kDa
Purification:	Affinity purification
Form:	Liquid
Buffer:	Rabbit IgG in phosphate buffered saline , pH 7.4, 150mM NaCl, 0.02% New type preservative N and 50% glycerol. Store at +4°C short term. Store at -20°C long term. Avoid freeze / thaw cycle.
Storage:	Store at 4°C short term. Aliquot and store at -20°C long term. Avoid freeze/thaw cycles.
Synonyms:	NACP; Non-A beta component of AD amyloid; Non-A4 component of amyloid precursor; SYN; SYUA; alpha-synuclein; PARK1; PARK4; PD1; SNCA;
Source:	Rabbit
Background:	Alpha-synuclein is a member of the synuclein family, which also includes beta- and gamma-synuclein. Synucleins are abundantly expressed in the brain and alpha- and beta-synuclein inhibit phospholipase D2 selectively. Neuronal protein that plays several roles in synaptic activity such as regulation of synaptic vesicle trafficking and subsequent neurotransmitter release. Participates as a monomer in synaptic vesicle exocytosis by enhancing vesicle priming, fusion and dilation of exocytotic fusion pores (PubMed:28288128, PubMed:30404828). Mechanistically, acts by increasing local Ca(2+) release from microdomains which is essential for the enhancement of ATP-induced exocytosis (PubMed:30404828). Acts also as a molecular chaperone in its multimeric membrane-bound state, assisting in the folding of synaptic fusion components called SNAREs (Soluble NSF Attachment Protein REceptors) at presynaptic plasma membrane in conjunction with cysteine string protein-alpha/DNAJC5 (PubMed:20798282). This chaperone activity is important to sustain

For Research Use Only

IMMUNOLOGICAL SCIENCES

Web-site: <https://immunologicalsciences.com> - E-mail: info@immunologicalsciences.com

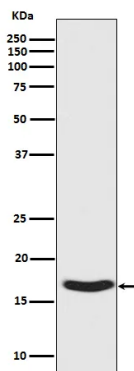


normal SNARE-complex assembly during aging (PubMed:20798282).
Plays also a role in the regulation of the dopamine neurotransmission by
associating with the dopamine transporter (DAT1) and thereby modulating
its activity (PubMed:26442590).

For Research Use Only

IMMUNOLOGICAL SCIENCES

Web-site: <https://immunologicalsciences.com> - E-mail: info@immunologicalsciences.com



Western blot analysis of Synuclein phosphorylation expression in Human fetal brain lysate.

For Research Use Only

IMMUNOLOGICAL SCIENCES

Web-site: <https://immunologicalsciences.com> - E-mail: info@immunologicalsciences.com