

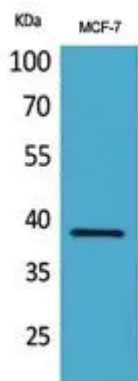


Product name:	Cerberus Rabbit Polyclonal Antibody
Cat number:	ABN08678
Conjugate:	Unconjugated
Size:	100ul
Clone:	POLY
Concentration:	1mg/ml
Host:	Rabbit
Isotype:	IgG
Immunogen:	The antiserum was produced against synthesized peptide derived from the Internal region of human CER1. AA range:91-140
Reactivity:	Human,Rat
Applications:	WB 1:500-1:2000,IHC 1:100-1:300,ICC/IF 1:50-1:200,ELISA 1:10000-1:20000
Molecular Weight:	30kDa
Purification:	Affinity purification
Form:	liquid
Buffer:	Liquid in PBS containing 50% glycerol, 0.5% protective protein and 0.02% New type preservative N.
Storage:	Store at 4°C short term. Aliquot and store at -20°C long term. Avoid freeze/thaw cycles.
Synonyms:	CER1; DAND4; Cerberus; Cerberus-related protein; DAN domain family member 4
Source:	Rabbit
Background:	This gene encodes a cytokine member of the cysteine knot superfamily, characterized by nine conserved cysteines and a cysteine knot region. The cerberus-related cytokines, together with Dan and DRM/Gremlin, represent a group of bone morphogenetic protein (BMP) antagonists that can bind directly to BMPs and inhibit their activity. [provided by RefSeq, Jul 2008],function:Cytokine that may play a role in anterior neural induction and somite formation during embryogenesis in part through a BMP-inhibitory mechanism. Can regulate Nodal signaling during gastrulation as well as the formation and patterning of the primitive streak.,PTM:N-glycosylated.,sequence caution:Translated as Ser.,similarity:Belongs to the DAN family.,similarity:Contains 1 CTCK (C-terminal cysteine knot-like) domain.,subunit:Forms monomers and predominantly dimers.,

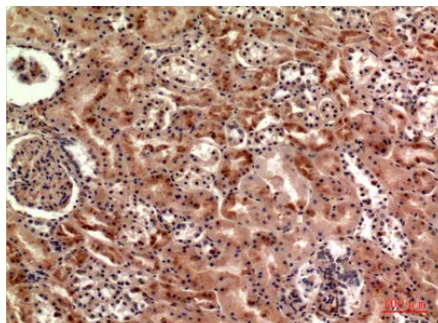
For Research Use Only

IMMUNOLOGICAL SCIENCES

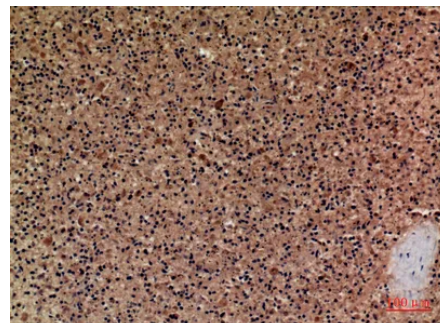
Web-site: <https://immunologicalsciences.com> - E-mail: info@immunologicalsciences.com



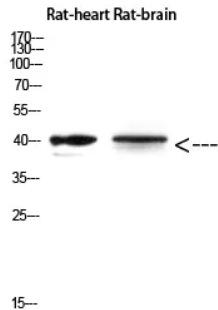
Western Blot analysis of MCF-7 cells using Cerberus Polyclonal Antibody. Antibody was diluted at 1:500. Secondary antibody was diluted at 1:20000



Immunohistochemical analysis of paraffin-embedded human-kidney, antibody was diluted at 1:100



Immunohistochemical analysis of paraffin-embedded human-spleen, antibody was diluted at 1:100



Western Blot analysis of Rat-heart Rat-brain using Cerberus Polyclonal Antibody diluted at 1:500. Secondary antibody was diluted at 1:20000

For Research Use Only
IMMUNOLOGICAL SCIENCES