

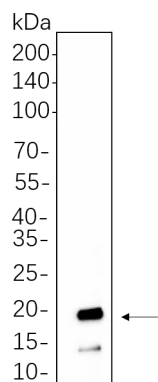


Product name:	Synuclein- α Rabbit Monoclonal Antibody
Cat number:	MABN21060
Conjugate:	Unconjugated
Size:	100ul
Concentration:	1mg/ml
Host:	Rabbit
Isotype:	IgG,Kappa
Immunogen:	A synthetic peptide corresponding to target protein
Reactivity:	Human,Mouse,Rat
Applications:	WB 1:2000-1:10000,IHC 1:200-1:1000,ICC/IF 1:200-1:1000,ELISA 1:5000-1:20000,IP 1:50-1:200
Molecular Weight:	Calculated MW:14kD;Observed MW:18kD
Purification:	Affinity purification
Form:	liquid
Buffer:	PBS, 50% glycerol, 0.05% Proclin 300, 0.05%protective protein
Storage:	Store at 4°C short term. Aliquot and store at -20°C long term. Avoid freeze/thaw cycles.
Synonyms:	SNCA;NACP;PARK1;Alpha-synuclein;Non-A beta component of AD amyloid;Non-A4 component of amyloid precursor;NACP
Source:	Rabbit
Background:	Cell localization:Cytoplasm . Membrane . Nucleus . Cell junction, synapse . Secreted . Cell projection, axon . Membrane-bound in dopaminergic neurons (PubMed:15282274). Expressed and colocalized with SEPTIN4 in dopaminergic axon terminals, especially at the varicosities (By similarity). ..Alpha-synuclein is a member of the synuclein family, which also includes beta- and gamma-synuclein. Synucleins are abundantly expressed in the brain and alpha- and beta-synuclein inhibit phospholipase D2 selectively. SNCA may serve to integrate presynaptic signaling and membrane trafficking. Defects in SNCA have been implicated in the pathogenesis of Parkinson disease. SNCA peptides are a major component of amyloid plaques in the brains of patients with Alzheimer's disease. Alternatively spliced transcripts encoding different isoforms have been identified for this gene. [provided by RefSeq, Feb 2016],

For Research Use Only

IMMUNOLOGICAL SCIENCES

Web-site: <https://immunologicalsciences.com> - E-mail: info@immunologicalsciences.com



HeLa cell lysates were separated by 4-20% SDS-PAGE, and the membrane was blotted with Synuclein- α Rabbit Monoclonal Antibody 1:1000. The HRP-conjugated Goat anti-Rabbit IgG(H + L) antibody was used to detect the antibody.

**For Research Use Only
IMMUNOLOGICAL SCIENCES**