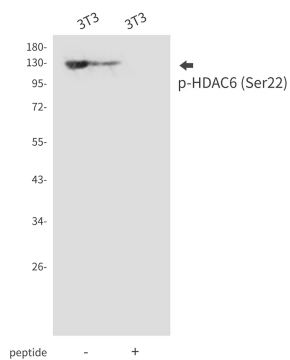


Product name:	Phospho-HDAC6 (Ser22) Rabbit Polyclonal Antibody
Cat number:	ABN00938
Conjugate:	Unconjugated
Size:	100ul
Clone:	POLY
Concentration:	1mg/ml
Host:	Rabbit
Isotype:	IgG
Immunogen:	A synthetic Phosphorylated peptide corresponding to residues target protein
Reactivity:	Human,Mouse
Applications:	WB 1:500-1:1000
Molecular Weight:	131 kDa
Purification:	Affinity purification
Form:	liquid
Buffer:	Liquid in PBS containing 50% glycerol, 0.5% protective protein and 0.02% sodium azide, pH 7.3.
Storage:	Store at 4°C short term. Aliquot and store at -20°C long term. Avoid freeze/thaw cycles.
Synonyms:	HDAC6; KIAA0901; JM21; Histone deacetylase 6; HD6
Source:	Rabbit
Background:	Involved in the regulation of many cellular processes, including cell migration, immune synapse formation, viral infection, and degradation of misfolded proteins. HDAC6 binds to both poly-ubiquitinated misfolded proteins and dynein motors, facilitating the transport of misfolded proteins to the aggresome. Required for subsequent recruitment of the autophagic machinery and clearance of aggresomes from the cell. Plays a key role in the protection against the deleterious effects of pathological protein aggregation that occurs in various diseases.

For Research Use Only

IMMUNOLOGICAL SCIENCES

Web-site: <https://immunologicalsciences.com> - E-mail: info@immunologicalsciences.com



Western blot analysis of
Phospho-HDAC6 (Ser22) in 3T3 lysates
using Phospho-HDAC6 (Ser22)
antibody.