

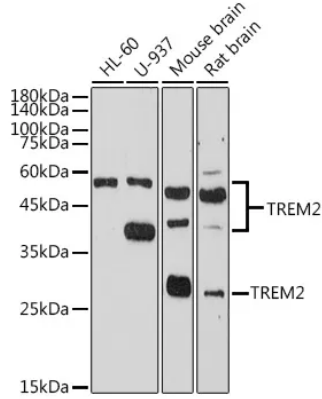


<b>Product name:</b>	TREM2 Rabbit Polyclonal Antibody
<b>Cat number:</b>	ABN03407
<b>Conjugate:</b>	Unconjugated
<b>Size:</b>	100ul
<b>Clone:</b>	POLY
<b>Concentration:</b>	1mg/ml
<b>Host:</b>	Rabbit
<b>Isotype:</b>	IgG
<b>Immunogen:</b>	Recombinant protein of human TREM2
<b>Reactivity:</b>	Human,Mouse,Rat
<b>Applications:</b>	WB 1:500-1:1000,IHC 1:50-1:100,ICC/IF 1:50-1:200
<b>Molecular Weight:</b>	25 kDa
<b>Purification:</b>	Affinity purification
<b>Form:</b>	liquid
<b>Buffer:</b>	Liquid in PBS containing 50% glycerol, 0.5% protective protein and 0.02% sodium azide, pH 7.3.
<b>Storage:</b>	Store at 4°C short term. Aliquot and store at -20°C long term. Avoid freeze/thaw cycles.
<b>Synonyms:</b>	TREM2; TREM-2; Trem2a; Trem2b; Trem2c; triggering receptor expressed on myeloid cells 2
<b>Source:</b>	Rabbit
<b>Background:</b>	This gene encodes a membrane protein that forms a receptor signaling complex with the TYRO protein tyrosine kinase binding protein. The encoded protein functions in immune response and may be involved in chronic inflammation by triggering the production of constitutive inflammatory cytokines. Defects in this gene are a cause of polycystic lipomembranous osteodysplasia with sclerosing leukoencephalopathy (PLOSL). Alternative splicing results in multiple transcript variants encoding different isoforms.

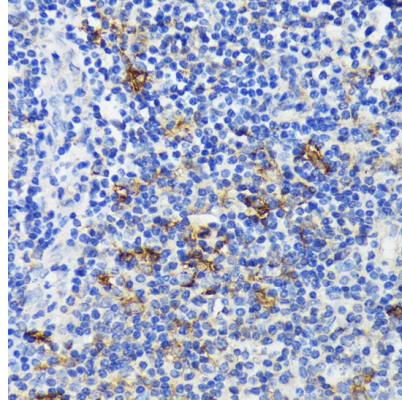
**For Research Use Only**

**IMMUNOLOGICAL SCIENCES**

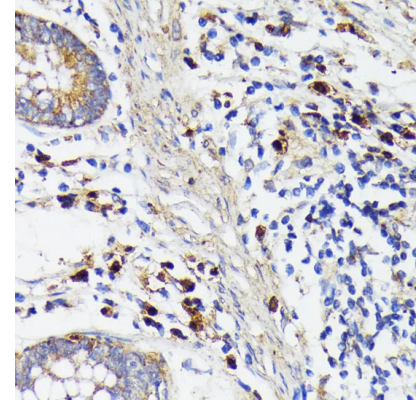
Web-site: <https://immunologicalsciences.com> - E-mail: [info@immunologicalsciences.com](mailto:info@immunologicalsciences.com)



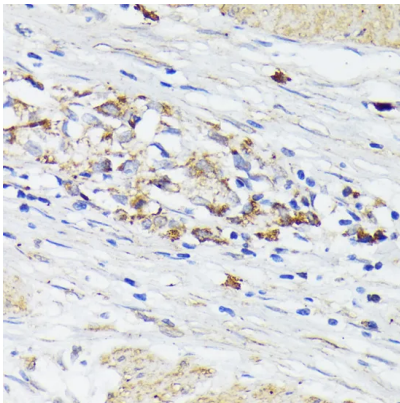
Western blot analysis of TREM2 in various cell lines lysates using TREM2 antibody.



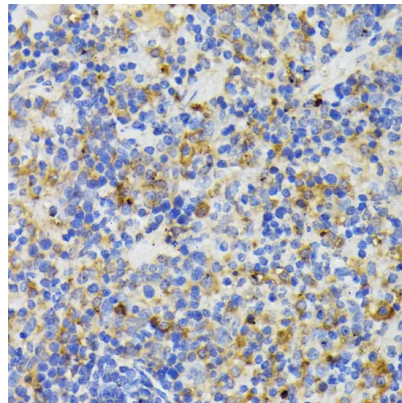
Immunohistochemistry analysis of paraffin-embedded Human tonsil using TREM2 antibody. High-pressure and temperature Sodium Citrate pH 6.0 was used for antigen retrieval.



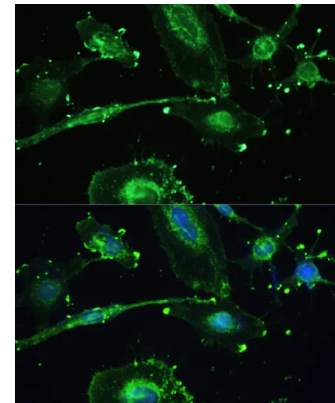
Immunohistochemistry analysis of paraffin-embedded Human colon carcinoma using TREM2 antibody. High-pressure and temperature Sodium Citrate pH 6.0 was used for antigen retrieval.



Immunohistochemistry analysis of paraffin-embedded Human gastric cancer using TREM2 antibody. High-pressure and temperature Sodium Citrate pH 6.0 was used for antigen retrieval.



Immunohistochemistry analysis of paraffin-embedded mouse spleen using TREM2 antibody. High-pressure and temperature Sodium Citrate pH 6.0 was used for antigen retrieval.



Immunofluorescence analysis of TREM2 in U251MG using TREM2 antibody, and DAPI (blue).

**For Research Use Only  
IMMUNOLOGICAL SCIENCES**