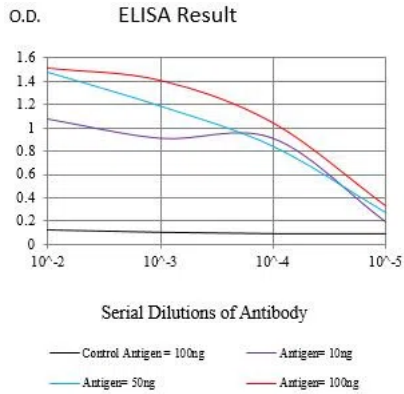


Product name:	ALDH1L1 Mouse Monoclonal Antibody
Cat number:	MABN82834
Conjugate:	Unconjugated
Size:	100ul
Concentration:	1mg/ml
Host:	Mouse
Isotype:	Mouse IgG1
Immunogen:	Purified recombinant fragment of human ALDH1L1 (AA: 10-222) expressed in E. Coli.
Reactivity:	Human, Mouse, Rat
Applications:	WB 1:500-1:2000,IHC 1:200-1:1000,ELISA 1:5000-1:20000,FC 1:200-1:400
Molecular Weight:	8kDa
Purification:	Affinity purification
Form:	liquid
Buffer:	Purified antibody in PBS with 0.05% sodium azide
Storage:	Store at 4°C short term. Aliquot and store at -20°C long term. Avoid freeze/thaw cycles.
Synonyms:	FDH; FTHFD; 10-fTHF; 10-FTHFDH
Source:	Mouse
Background:	The protein encoded by this gene catalyzes the conversion of 10-formyltetrahydrofolate, nicotinamide adenine dinucleotide phosphate (NADP+), and water to tetrahydrofolate, NADPH, and carbon dioxide. The encoded protein belongs to the aldehyde dehydrogenase family. Loss of function or expression of this gene is associated with decreased apoptosis, increased cell motility, and cancer progression. There is an antisense transcript that overlaps on the opposite strand with this gene locus. Alternative splicing results in multiple transcript variants.

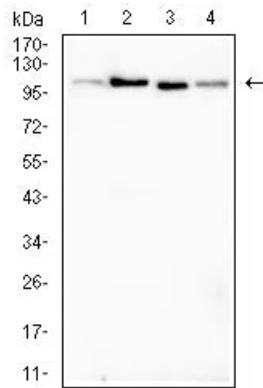
For Research Use Only

IMMUNOLOGICAL SCIENCES

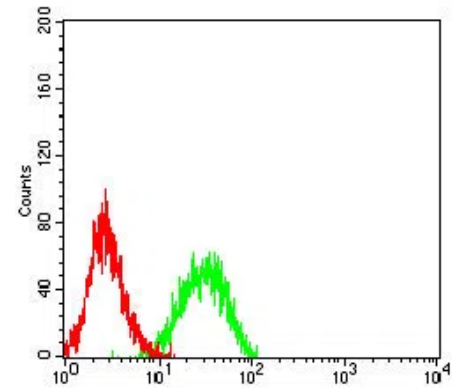
Web-site: <https://immunologicalsciences.com> - E-mail: info@immunologicalsciences.com



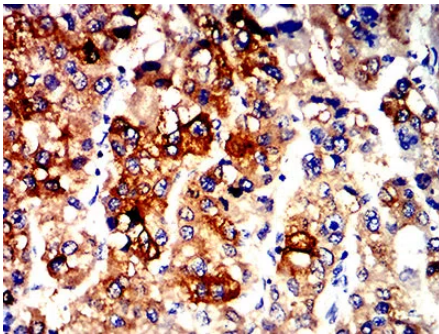
Black line: Control Antigen (100 ng); Purple line: Antigen (10ng); Blue line: Antigen (50 ng); Red line: Antigen (100 ng)



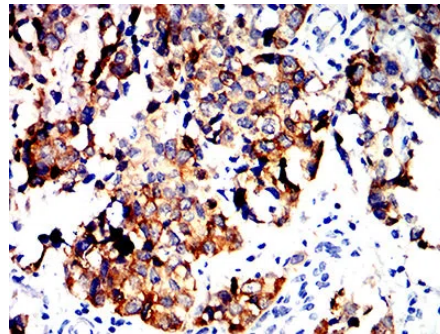
Western blot analysis using ALDH1L1 mouse mAb against Rat kidney (1), Mouse liver (2), Rat liver (3) and Mouse kidney (4) tissue lysate.



Flow cytometric analysis of Jurkat cells using ALDH1L1 mouse mAb (green) and negative control (red).



Immunohistochemical analysis of paraffin-embedded human liver cancer tissues using ALDH1L1 mouse mAb with DAB staining.



Immunohistochemical analysis of paraffin-embedded human bladder cancer tissues using ALDH1L1 mouse mAb with DAB staining.

For Research Use Only
IMMUNOLOGICAL SCIENCES