

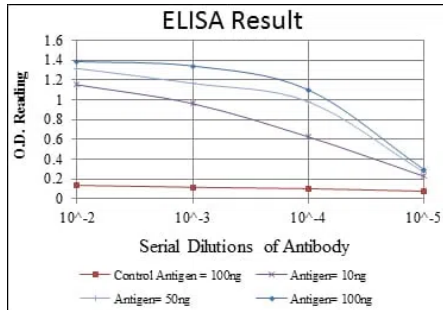


Product name:	MSI1 Mouse Monoclonal Antibody
Cat number:	MABN80958
Conjugate:	Unconjugated
Size:	100ul
Concentration:	1mg/ml
Host:	Mouse
Isotype:	Mouse IgG1
Immunogen:	Purified recombinant fragment of human MSI1 expressed in E. Coli.
Reactivity:	Human
Applications:	WB 1:500-1:2000,ELISA 1:5000-1:20000,FC 1:200-1:400
Molecular Weight:	39kDa
Purification:	Affinity purification
Form:	liquid
Buffer:	PBS containing 0.03% sodium azide.
Storage:	Store at 4°C short term. Aliquot and store at -20°C long term. Avoid freeze/thaw cycles.
Synonyms:	MSI1
Source:	Mouse
Background:	<p>This gene encodes a protein containing two conserved tandem RNA recognition motifs. Similar proteins in other species function as RNA-binding proteins and play central roles in posttranscriptional gene regulation. Expression of this gene has been correlated with the grade of the malignancy and proliferative activity in gliomas and melanomas. Musashi-1 is frequently used as a marker for proliferating neural precursor cells, it is also expressed in epithelial stem cells including intestinal and mammary gland stem cells. Tissue specificity: Detected in fetal kidney, brain, liver and lung, and in adult brain and pancreas. Detected in hepatoma cell lines.</p>

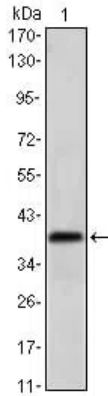
For Research Use Only

IMMUNOLOGICAL SCIENCES

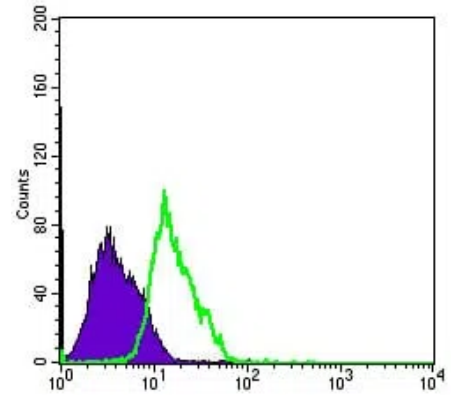
Web-site: <https://immunologicalsciences.com> - E-mail: info@immunologicalsciences.com



Red: Control Antigen (100ng); Purple: Antigen (10ng); Green: Antigen (50ng); Blue: Antigen (100ng);



Western blot analysis using MSI1 mouse mAb against NTERA-2 cell lysate.



Flow cytometric analysis of PC-2 cells using MSI1 mouse mAb (green) and negative control (purple).

For Research Use Only

IMMUNOLOGICAL SCIENCES