

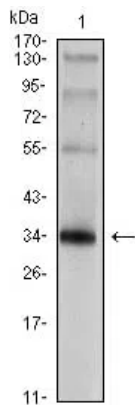


| | |
|--------------------------|-------------------------------------------------------------------------------------------------------------------------------------------------------------------------------------------------------------------------------------------------------------------------------------------------------------------------------------------------------------------------------------------------------------------------------------------------------------------------------------------------------------------------------------------------------------------------------------------------------|
| Product name: | SYP Mouse Monoclonal Antibody |
| Cat number: | MABN80835 |
| Conjugate: | Unconjugated |
| Size: | 100ul |
| Concentration: | 1mg/ml |
| Host: | Mouse |
| Isotype: | Mouse IgG1 |
| Immunogen: | Purified recombinant fragment of SYP expressed in E. Coli. |
| Reactivity: | Human,Rat |
| Applications: | WB 1:500-1:2000,IHC 1:200-1:1000,ELISA 1:5000-1:20000 |
| Molecular Weight: | 8kDa |
| Purification: | Affinity purification |
| Form: | liquid |
| Buffer: | Purified antibody in PBS with 0.05% sodium azide. |
| Storage: | Store at 4°C short term. Aliquot and store at -20°C long term. Avoid freeze/thaw cycles. |
| Synonyms: | MRXSYP; SYP |
| Source: | Mouse |
| Background: | Synaptophysin (p38) is an integral membrane protein of small synaptic vesicles in brain and endocrine cells. Synaptophysin contains four transmembrane domains that form a hexameric channel or gap junction-like pore. Synaptophysin binds to the SNARE protein synaptobrevin/VAMP, which prevents the inclusion of synaptobrevin in the synaptic vesicle fusion complex and creates a pool of synaptobrevin for exocytosis when synapse activity increases. Synaptophysin is also responsible for targeting synaptobrevin 2/VAMP2 to synaptic vesicles, a critical component of the fusion complex. |

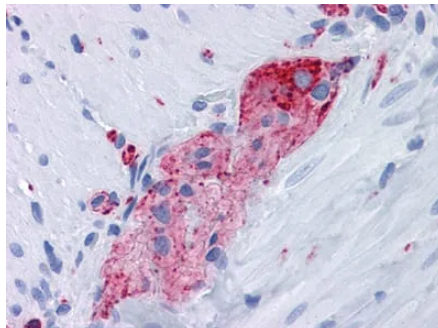
For Research Use Only

IMMUNOLOGICAL SCIENCES

Web-site: <https://immunologicalsciences.com> - E-mail: info@immunologicalsciences.com



Western blot analysis using SYP mouse mAb against rat brain tissue lysate.



Immunohistochemical analysis of paraffin-embedded human Small Intestine, myenteric plexus tissues using anti-SYP mouse mAb

For Research Use Only

IMMUNOLOGICAL SCIENCES

Web-site: <https://immunologicalsciences.com> - E-mail: info@immunologicalsciences.com