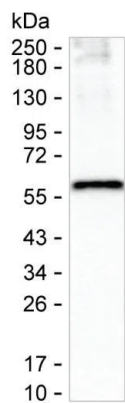


<b>Product name:</b>	SLC32A1 Mouse Monoclonal Antibody
<b>Cat number:</b>	MABN83628
<b>Conjugate:</b>	Unconjugated
<b>Size:</b>	100ul
<b>Concentration:</b>	1mg/ml
<b>Host:</b>	Mouse
<b>Isotype:</b>	Mouse IgG1
<b>Immunogen:</b>	Purified recombinant fragment of human SLC32A1
<b>Reactivity:</b>	Human, Rat
<b>Applications:</b>	WB 1:500-1:1000,IHC 1:50-1:200
<b>Molecular Weight:</b>	4kDa
<b>Purification:</b>	Affinity purification
<b>Form:</b>	liquid
<b>Buffer:</b>	Purified antibody in PBS with 0.05% sodium azide
<b>Storage:</b>	Store at 4°C short term. Aliquot and store at -20°C long term. Avoid freeze/thaw cycles.
<b>Synonyms:</b>	SLC32A1
<b>Source:</b>	Mouse

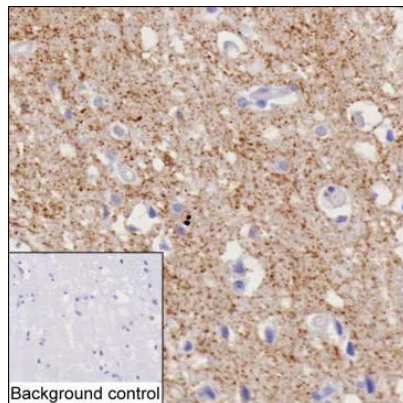
**For Research Use Only**

**IMMUNOLOGICAL SCIENCES**

Web-site: <https://immunologicalsciences.com> - E-mail: [info@immunologicalsciences.com](mailto:info@immunologicalsciences.com)



Western blot analysis using SLC32A1 mouse mAb against rat brain tissue



IHC-P analysis of cerebral cortex tissue by anti-SLC32A1 antibody (AMM83628)

**For Research Use Only**

**IMMUNOLOGICAL SCIENCES**

Web-site: <https://immunologicalsciences.com> - E-mail: [info@immunologicalsciences.com](mailto:info@immunologicalsciences.com)