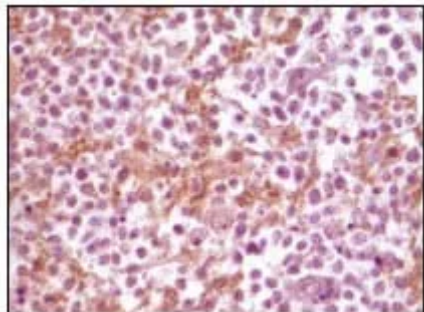


Product name:	SNCA Mouse Monoclonal Antibody
Cat number:	MABN80548
Conjugate:	Unconjugated
Size:	100ul
Concentration:	1mg/ml
Host:	Mouse
Isotype:	Mouse IgG1
Immunogen:	Purified recombinant fragment of SNCA expressed in E. Coli.
Reactivity:	Human
Applications:	IHC 1:200-1:1000,ELISA 1:5000-1:20000
Molecular Weight:	/
Purification:	Affinity purification
Form:	liquid
Buffer:	Purified antibody in PBS with 0.05% sodium azide.
Storage:	Store at 4°C short term. Aliquot and store at -20°C long term. Avoid freeze/thaw cycles.
Synonyms:	PD1; NACP; PARK1; PARK4; MGC110988
Source:	Mouse
Background:	Alpha-synuclein (SNCA), with 140-amino acid protein (about 15kDa), belongs to the synuclein family, which also includes beta- and gamma-synuclein. SNCA is a soluble protein, expressed principally in the brain but also expressed in low concentrations in all tissues examined (except liver). SNCA is implicated in the regulation of dopamine release and transport. The triplication of the SNCA can cause Parkinson disease (PD) and diffuse Lewy body disease within the same kindred. SNCA peptides are a major component of amyloid plaques in the brains of patients with Alzheimer's disease. Immunohistochemistry for SNCA has become the histological technique of choice for the diagnosis for Parkinson's disease, Dementia with Lewy bodies and Multiple System Atrophy.

For Research Use Only

IMMUNOLOGICAL SCIENCES

Web-site: <https://immunologicalsciences.com> - E-mail: info@immunologicalsciences.com



Immunohistochemical analysis of paraffin-embedded human glioma tissue, showing membrane localization using SNCA mouse mAb with DAB staining.

**For Research Use Only
IMMUNOLOGICAL SCIENCES**