

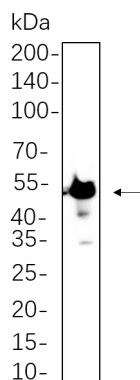


Product name:	β3 Tubulin Rabbit Monoclonal Antibody
Cat number:	MABN21165
Conjugate:	Unconjugated
Size:	100ul
Concentration:	1mg/ml
Host:	Rabbit
Isotype:	IgG,Kappa
Immunogen:	A synthetic peptide of human beta III Tubulin
Reactivity:	Human,Mouse,Rat
Applications:	WB 1:2000-1:10000,IHC 1:1000-1:5000,ICC/IF 1:200-1:1000,ELISA 1:5000-1:20000,IP 1:50-1:200
Molecular Weight:	Calculated MW:50kD;Observed MW:50kD
Purification:	Affinity purification
Form:	Liquid
Buffer:	PBS, 50% glycerol, 0.05% Proclin 300, 0.05%protective protein
Storage:	Store at 4°C short term. Aliquot and store at -20°C long term. Avoid freeze/thaw cycles.
Synonyms:	TUBB3;TUBB4;Tubulin beta-3 chain;Tubulin beta-4 chain;Tubulin beta-III
Source:	Rabbit
Background:	Cell localization:Cytoplasm.tubulin beta 3 class III(TUBB3) Homo sapiens This gene encodes a class III member of the beta tubulin protein family. Beta tubulins are one of two core protein families (alpha and beta tubulins) that heterodimerize and assemble to form microtubules. This protein is primarily expressed in neurons and may be involved in neurogenesis and axon guidance and maintenance. Mutations in this gene are the cause of congenital fibrosis of the extraocular muscles type 3. Alternate splicing results in multiple transcript variants. A pseudogene of this gene is found on chromosome 6. [provided by RefSeq, Oct 2010],

For Research Use Only

IMMUNOLOGICAL SCIENCES

Web-site: <https://immunologicalsciences.com> - E-mail: info@immunologicalsciences.com



SH-SY5Y whole cell lysates were separated by 10% SDS-PAGE, and the membrane was blotted with β3 Tubulin Rabbit Monoclonal Antibody(1:1000). The HRP-conjugated Goat anti-Rabbit IgG(H + L) antibody was used to detect the antibody.

For Research Use Only
IMMUNOLOGICAL SCIENCES