

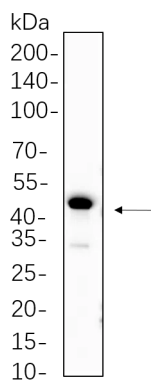


| | |
|--------------------------|--|
| Product name: | PAX6 Rabbit Monoclonal Antibody |
| Cat number: | MABN21254 |
| Conjugate: | Unconjugated |
| Size: | 100ul |
| Concentration: | 1mg/ml |
| Host: | Rabbit |
| Isotype: | IgG,Kappa |
| Immunogen: | Recombinant protein of human PAX6 |
| Reactivity: | Human,Mouse |
| Applications: | WB 1:2000-1:10000,IHC 1:200-1:1000,ICC/IF 1:200-1:1000,ELISA 1:5000-1:20000,IP 1:50-1:200 |
| Molecular Weight: | Calculated MW:47kD;Observed MW:47kD |
| Purification: | Affinity purification |
| Form: | Liquid |
| Buffer: | PBS, 50% glycerol, 0.05% Proclin 300, 0.05%protective protein |
| Storage: | Store at 4°C short term. Aliquot and store at -20°C long term. Avoid freeze/thaw cycles. |
| Synonyms: | Paired box protein Pax-6;Aniridia type II protein;Oculorhombin; |
| Source: | Rabbit |
| Background: | Cell localization:Nucleus.This gene encodes a homeobox and paired domain-containing protein that binds DNA and functions as a regulator of transcription. Activity of this protein is key in the development of neural tissues, particularly the eye. This gene is regulated by multiple enhancers located up to hundreds of kilobases distant from this locus. Mutations in this gene or in the enhancer regions can cause ocular disorders such as aniridia and Peter's anomaly. Use of alternate promoters and alternative splicing result in multiple transcript variants encoding different isoforms. [provided by RefSeq, Jul 2015], |

For Research Use Only

IMMUNOLOGICAL SCIENCES

Web-site: <https://immunologicalsciences.com> - E-mail: info@immunologicalsciences.com



HEK293 cell lysates were separated by 4-20% SDS-PAGE, and the membrane was blotted with PAX6 Rabbit Monoclonal Antibody 1:1000. The HRP-conjugated Goat anti-Rabbit IgG(H + L) antibody was used to detect the antibody.

For Research Use Only
IMMUNOLOGICAL SCIENCES