

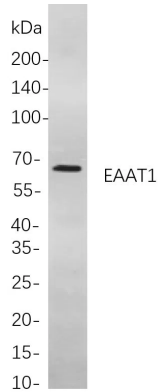


|                          |   |
|--------------------------|---|
| <b>Product name:</b>     | EAAT1 Rabbit Monoclonal Antibody  |
| <b>Cat number:</b>       | MABN21573   |
| <b>Conjugate:</b>        | Unconjugated  |
| <b>Size:</b>             | 100ul   |
| <b>Concentration:</b>    | 1mg/ml  |
| <b>Host:</b>             | Rabbit  |
| <b>Isotype:</b>          | IgG,Kappa   |
| <b>Immunogen:</b>        | A synthetic peptide of human EAAT1  |
| <b>Reactivity:</b>       | Human,Mouse,Rat   |
| <b>Applications:</b>     | WB 1:500-1:2000,IHC 1:200-1:1000,ICC/IF 1:200-1:1000,ELISA 1:5000-1:20000,IP 1:50-1:200   |
| <b>Molecular Weight:</b> | Calculated MW:60kD;Observed MW:59kD   |
| <b>Purification:</b>     | Affinity purification   |
| <b>Form:</b>             | Liquid  |
| <b>Buffer:</b>           | PBS, 50% glycerol, 0.05% Proclin 300, 0.05%protective protein   |
| <b>Storage:</b>          | Store at 4°C short term. Aliquot and store at -20°C long term. Avoid freeze/thaw cycles.  |
| <b>Synonyms:</b>         | SLC1A3;EAAT1;GLAST;GLAST1;Excitatory amino acid transporter 1;Sodium-dependent glutamate/aspartate transporter 1;GLAST-1;Solute carrier family 1 member 3   |
| <b>Source:</b>           | Rabbit  |
| <b>Background:</b>       | Cell localization:Cell membrane.This gene encodes a member of a member of a high affinity glutamate transporter family. This gene functions in the termination of excitatory neurotransmission in central nervous system. Mutations are associated with episodic ataxia, Type 6. Alternative splicing results in multiple transcript variants.[provided by RefSeq, Feb 2014], |

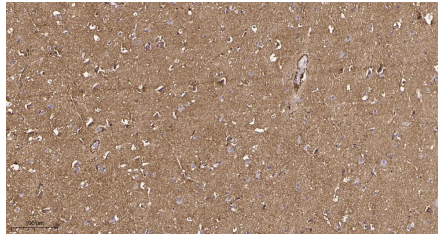
**For Research Use Only**

**IMMUNOLOGICAL SCIENCES**

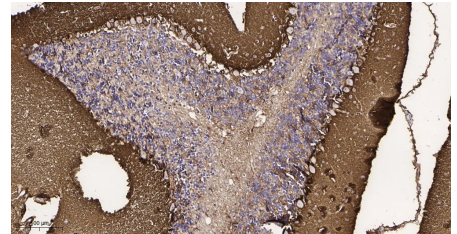
Web-site: <https://immunologicalsciences.com> - E-mail: [info@immunologicalsciences.com](mailto:info@immunologicalsciences.com)



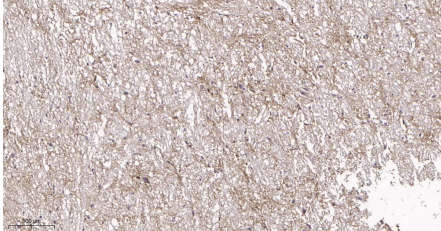
Western blot analysis of lysates from U-87MG cells, using EAAT1 Rabbit mAb. The HRP-conjugated Goat anti-Rabbit IgG antibody was used to detect the antibody.



Immunohistochemical analysis of paraffin-embedded human brain tissue. 1, EAAT1 Rabbit Monoclonal Antibody was diluted at 1:200(4°C,overnight). 2, EDTA pH 9.0 was used for antibody retrieval(>98°C,20min). 3,Secondary antibody was diluted at 1:200(room temperature, 30min).



Immunohistochemical analysis of paraffin-embedded mouse brain tissue. 1, EAAT1 Rabbit Monoclonal Antibody was diluted at 1:200(4°C,overnight). 2, EDTA pH 9.0 was used for antibody retrieval(>98°C,20min). 3,Secondary antibody was diluted at 1:200(room temperature, 30min).



Immunohistochemical analysis of paraffin-embedded rat brain tissue. 1, EAAT1 Rabbit Monoclonal Antibody was diluted at 1:200(4°C,overnight). 2, EDTA pH 9.0 was used for antibody retrieval(>98°C,20min). 3,Secondary antibody was diluted at 1:200(room temperature, 30min).

**For Research Use Only**

**IMMUNOLOGICAL SCIENCES**

Web-site: <https://immunologicalsciences.com> - E-mail: [info@immunologicalsciences.com](mailto:info@immunologicalsciences.com)