

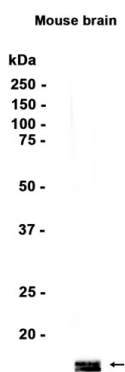


Product name:	alpha/beta Synuclein Rabbit Monoclonal Antibody
Cat number:	MABN86637
Conjugate:	Unconjugated
Size:	100ul
Concentration:	1mg/ml
Host:	Rabbit
Isotype:	IgG
Immunogen:	A synthetic peptide of human alpha Synuclein
Reactivity:	Human,Mouse,Rat
Applications:	WB 1:1000-1:5000,ICC/IF 1:50-1:100,FC 1:20-1:50
Molecular Weight:	18 kDa
Purification:	Affinity purification
Form:	Liquid
Buffer:	Supplied in 50mM Tris-Glycine(pH 7.4), 0.15M NaCl, 40% Glycerol, 0.01% sodium azide and 0.05% protective protein. Stable for 12 months from date of receipt.
Storage:	Store at 4°C short term. Aliquot and store at -20°C long term. Avoid freeze/thaw cycles.
Synonyms:	PD1; NACP; PARK1; PARK4
Source:	Rabbit
Background:	Alpha-synuclein is a member of the synuclein family, which also includes beta- and gamma-synuclein. Synucleins are abundantly expressed in the brain and alpha- and beta-synuclein inhibit phospholipase D2 selectively. SNCA may serve to integrate presynaptic signaling and membrane trafficking. Defects in SNCA have been implicated in the pathogenesis of Parkinson disease. SNCA peptides are a major component of amyloid plaques in the brains of patients with Alzheimer's disease. Alternatively spliced transcripts encoding different isoforms have been identified for this gene. [provided by RefSeq, Feb 2016]

For Research Use Only

IMMUNOLOGICAL SCIENCES

Web-site: <https://immunologicalsciences.com> - E-mail: info@immunologicalsciences.com



Western blot analysis of extracts from
Mouse brain tissue using alpha/beta
Synuclein Rabbit Monoclonal Antibody
at 1:1000.

For Research Use Only
IMMUNOLOGICAL SCIENCES