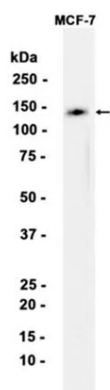


Product name:	NCAM2 Rabbit Monoclonal Antibody
Cat number:	MABN87162
Conjugate:	Unconjugated
Size:	100ul
Concentration:	1mg/ml
Host:	Rabbit
Isotype:	IgG
Immunogen:	A synthetic peptide of human NCAM2
Reactivity:	Human
Applications:	WB 1:1000-1:5000,IHC 1:50-1:100,IP 1:10-1:100
Molecular Weight:	140 kDa
Purification:	Affinity purification
Form:	Liquid
Buffer:	Supplied in 50mM Tris-Glycine(pH 7.4), 0.15M NaCl, 40% Glycerol, 0.01% sodium azide and 0.05% protective protein. Stable for 12 months from date of receipt.
Storage:	Store at 4°C short term. Aliquot and store at -20°C long term. Avoid freeze/thaw cycles.
Synonyms:	NCAM21
Source:	Rabbit
Background:	The protein encoded by this gene belongs to the immunoglobulin superfamily. It is a type I membrane protein and may function in selective fasciculation and zone-to-zone projection of the primary olfactory axons. [provided by RefSeq, Jul 2008]

For Research Use Only

IMMUNOLOGICAL SCIENCES

Web-site: <https://immunologicalsciences.com> - E-mail: info@immunologicalsciences.com



Western blot analysis of extracts from MCF-7 cells using NCAM2 Rabbit Monoclonal Antibody at 1:1000.

**For Research Use Only
IMMUNOLOGICAL SCIENCES**

Web-site: <https://immunologicalsciences.com> - E-mail: info@immunologicalsciences.com