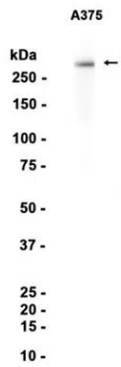


Product name:	CSPG4 Rabbit Monoclonal Antibody
Cat number:	MABN87577
Conjugate:	Unconjugated
Size:	100ul
Concentration:	1mg/ml
Host:	Rabbit
Isotype:	IgG
Immunogen:	Recombinant protein of human CSPG4
Reactivity:	Human
Applications:	WB 1:500-1:2000,IHC 1:50-1:200,ICC/IF 1:100-1:200,FC 1:200-1:500,IP 1:20-1:50
Molecular Weight:	251450 kDa
Purification:	Affinity purification
Form:	Liquid
Buffer:	Supplied in 50mM Tris-Glycine(pH 7.4), 0.15M NaCl, 40% Glycerol, 0.01% sodium azide and 0.05% protective protein. Stable for 12 months from date of receipt.
Storage:	Store at 4°C short term. Aliquot and store at -20°C long term. Avoid freeze/thaw cycles.
Synonyms:	NG2; MCSP; MCSPG; MSK16; HMW-MAA; MEL-CSPG
Source:	Rabbit
Background:	A human melanoma-associated chondroitin sulfate proteoglycan plays a role in stabilizing cell-substratum interactions during early events of melanoma cell spreading on endothelial basement membranes. CSPG4 represents an integral membrane chondroitin sulfate proteoglycan expressed by human malignant melanoma cells. [provided by RefSeq, Jul 2008]

For Research Use Only

IMMUNOLOGICAL SCIENCES

Web-site: <https://immunologicalsciences.com> - E-mail: info@immunologicalsciences.com



Western blot analysis of extracts from
A375 cells using CSPG4 Rabbit
Monoclonal Antibody at 1:1000.

**For Research Use Only
IMMUNOLOGICAL SCIENCES**

Web-site: <https://immunologicalsciences.com> - E-mail: info@immunologicalsciences.com