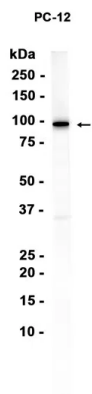


Product name:	Gephyrin Rabbit Monoclonal Antibody
Cat number:	MABN87803
Conjugate:	Unconjugated
Size:	100ul
Concentration:	1mg/ml
Host:	Rabbit
Isotype:	IgG
Immunogen:	A synthetic peptide of human Gephyrin
Reactivity:	Human,Mouse,Rat
Applications:	WB 1:1000-1:5000,IHC 1:50-1:100,ICC/IF 1:100-1:200,FC 1:10-1:100
Molecular Weight:	93 kDa
Purification:	Affinity purification
Form:	Liquid
Buffer:	Supplied in 50mM Tris-Glycine(pH 7.4), 0.15M NaCl, 40% Glycerol, 0.01% sodium azide and 0.05% protective protein. Stable for 12 months from date of receipt.
Storage:	Store at 4°C short term. Aliquot and store at -20°C long term. Avoid freeze/thaw cycles.
Synonyms:	GPH; GEPH; HKPX1; GPHRYN; MOCODC
Source:	Rabbit
Background:	This gene encodes a neuronal assembly protein that anchors inhibitory neurotransmitter receptors to the postsynaptic cytoskeleton via high affinity binding to a receptor subunit domain and tubulin dimers. In nonneuronal tissues, the encoded protein is also required for molybdenum cofactor biosynthesis. Mutations in this gene may be associated with the neurological condition hyperplexia and also lead to molybdenum cofactor deficiency. Numerous alternatively spliced transcript variants encoding different isoforms have been described; however, the full-length nature of all transcript variants is not currently known. [provided by RefSeq, Jul 2008]

For Research Use Only

IMMUNOLOGICAL SCIENCES

Web-site: <https://immunologicalsciences.com> - E-mail: info@immunologicalsciences.com



Western blot analysis of extracts from
PC-12 cells using Gephyrin Rabbit
Monoclonal Antibody at 1:1000.

**For Research Use Only
IMMUNOLOGICAL SCIENCES**

Web-site: <https://immunologicalsciences.com> - E-mail: info@immunologicalsciences.com