



Product name:	Stat6 (phospho Tyr641) Rabbit Polyclonal Antibody(\$99/20µL)
Cat number:	ABN05490
Conjugate:	Unconjugated
Size:	100ul
Clone:	POLY
Concentration:	1mg/ml
Host:	Rabbit
Isotype:	IgG
Immunogen:	Phosphopeptide Phospho-left and Non-Phosphopeptide Phospho-right, using STAT6 Phospho-Tyr641 Antibody Immunohistochemistry analysis of paraffin-embedded human breast carcinoma, using STAT6 Phospho-Tyr641 Antibody. The picture on the right is blocked with the phospho peptide. Western blot analysis of lysates from HeLa cells treated with IL-4, using STAT6 Phospho-Tyr641 Antibody. The lane on the right is blocked with the phospho peptide.
Reactivity:	Human,Mouse,Rat
Applications:	WB 1:500-1:2000,IHC 1:100-1:300,ICC/IF 1:50-1:200,ELISA 1:5000-1:20000
Molecular Weight:	94kDa
Purification:	Affinity purification
Form:	liquid
Buffer:	Liquid in PBS containing 50% glycerol, 0.5% protective protein and 0.02% New type preservative N.
Storage:	Store at 4°C short term. Aliquot and store at -20°C long term. Avoid freeze/thaw cycles.
Synonyms:	STAT6; Signal transducer and activator of transcription 6; IL-4 Stat
Source:	Rabbit
Background:	The protein encoded by this gene is a member of the STAT family of transcription factors. In response to cytokines and growth factors, STAT family members are phosphorylated by the receptor associated kinases, and then form homo- or heterodimers that translocate to the cell nucleus where they act as transcription activators. This protein plays a central role in exerting IL4 mediated biological responses. It is found to induce the expression of BCL2L1/BCL-X(L), which is responsible for the anti-apoptotic activity of IL4. Knockout studies in mice suggested the roles of this gene in differentiation of T helper 2 (Th2) cells, expression of cell surface markers, and class switch of immunoglobulins. Alternative splicing results in multiple transcript variants.[provided by RefSeq, May

For Research Use Only

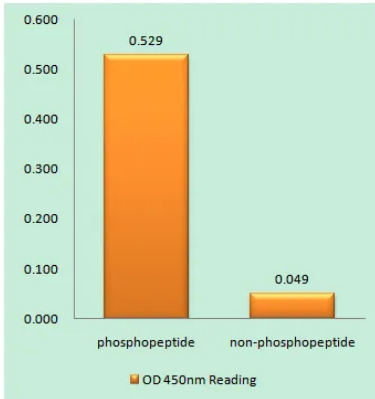
IMMUNOLOGICAL SCIENCES

2010],function:Carries out a dual function: signal transduction and activation of transcription. Involved in interleukin-4 signalling.,PTM:Tyrosine phosphorylated following stimulation by IL-4 and IL-3.,similarity:Belongs to the transcription factor STAT family.,similarity:Contains 1 SH2 domain.,subcellular location:Translocated into the nucleus in response to phosphorylation.,subunit:Forms a homodimer or a heterodimer with a related family member (By similarity). Interacts with NCOA1 via its C-terminal LXXLL motif.,

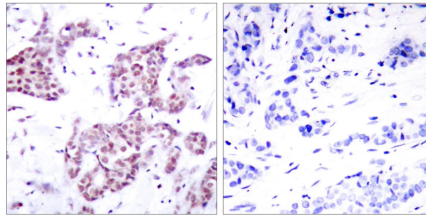
For Research Use Only

IMMUNOLOGICAL SCIENCES

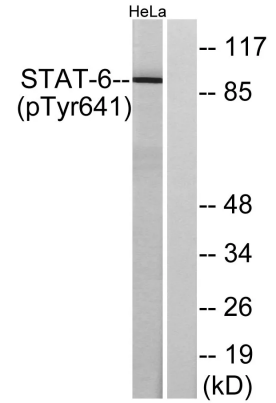
Web-site: <https://immunologicalsciences.com> - E-mail: info@immunologicalsciences.com



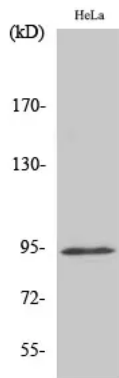
Enzyme-Linked Immunosorbent Assay (Phospho-ELISA) for Immunogen Phosphopeptide (Phospho-left) and Non-Phosphopeptide (Phospho-right), using STAT6 (Phospho-Tyr641) Antibody



Immunohistochemistry analysis of paraffin-embedded human breast carcinoma, using STAT6 (Phospho-Tyr641) Antibody. The picture on the right is blocked with the phospho peptide.



Western blot analysis of lysates from HeLa cells treated with IL-4, using STAT6 (Phospho-Tyr641) Antibody. The lane on the right is blocked with the phospho peptide.



Western Blot analysis of various cells using Phospho-Stat6 (Y641) Polyclonal Antibody

For Research Use Only
IMMUNOLOGICAL SCIENCES