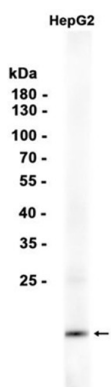


Product name:	TOMM20 Rabbit Monoclonal Antibody
Cat number:	MABN86525
Conjugate:	Unconjugated
Size:	100 ug
Concentration:	1mg/ml
Host:	Rabbit
Isotype:	IgG
Immunogen:	Recombinant protein of human TOMM20
Reactivity:	Human,Mouse,Rat
Applications:	WB 1:1000-1:5000,IHC 1:50-1:100,ICC/IF 1:100-1:200,FC 1:50-1:100
Molecular Weight:	Observed MW:16 kDa
Purification:	Affinity Purification
Form:	Liquid
Buffer:	50mM Tris-Glycine(pH 7.4), 0.15M NaCl, 40% Glycerol, 0.01% sodium azide and 0.05% protective protein. Stable for 12 months from date of receipt.
Storage:	Aliquot and store at -20°C (valid for 12 months). Avoid freeze/thaw cycles.
Synonyms:	MAS20; MOM19; TOM20
Source:	Rabbit
Background:	Central component of the receptor complex responsible for the recognition and translocation of cytosolically synthesized mitochondrial preproteins. Together with TOM22 functions as the transit peptide receptor at the surface of the mitochondrion outer membrane and facilitates the movement of preproteins into the TOM40 translocation pore (By similarity). [UniProt]

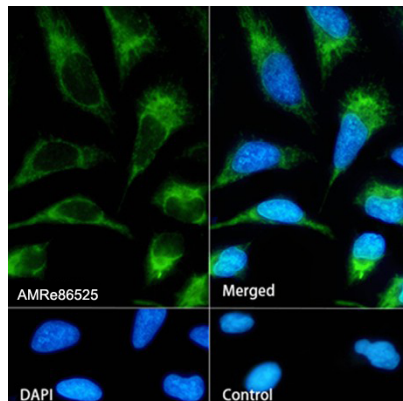
For Research Use Only

IMMUNOLOGICAL SCIENCES

Web-site: <https://immunologicalsciences.com> - E-mail: info@immunologicalsciences.com



Western blot analysis of extracts from HepG2 cells using TOMM20 Rabbit Monoclonal Antibody at 1:1000.



Immunofluorescence analysis of HeLa cells labelling TOMM20 with MABN86525.