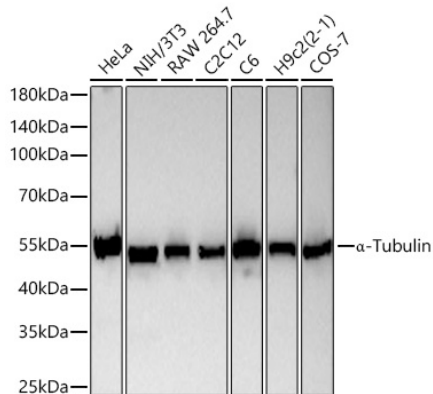


---

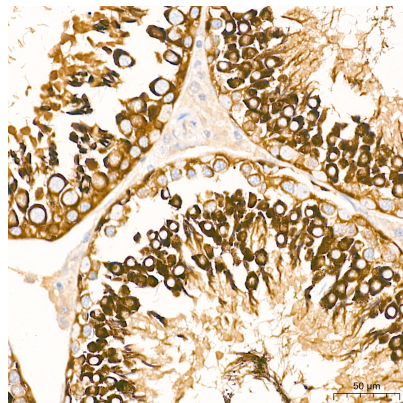
<b>Product name:</b>	$\alpha$ -Tubulin Mouse Monoclonal Antibody
<b>Cat number:</b>	MAB-94264
<b>Conjugate:</b>	Unconjugated
<b>Size:</b>	100 ug
<b>Clone:</b>	TU-02
<b>Concentration:</b>	1mg/ml
<b>Host:</b>	Mouse
<b>Isotype:</b>	IgG1
<b>Immunogen:</b>	Recombinant protein (or fragment). This information is considered to be commercially sensitive.
<b>Reactivity:</b>	Human, Mouse, Rat
<b>Applications:</b>	WB 1:5000 - 1:20000 IHC-P 1:500 - 1:2000 IF/ICC 1:200 - 1:1000 ELISA Recommended starting concentration is 1 $\mu$ g/mL. Please optimize the concentration based on your specific assay requirements.
<b>Molecular Weight:</b>	55kDa
<b>Purification:</b>	Affinity purification
<b>Form:</b>	Liquid
<b>Buffer:</b>	PBS containing 50% glycerol and 1% BSA, preserved with proclin300 or sodium azide (as specified on the Certificate of Analysis), pH 7.3.
<b>Storage:</b>	Store at -20°C. Avoid freeze / thaw cycles.
<b>Synonyms:</b>	ALS22; TUBA1; H2-ALPHA; $\alpha$ -Tubulin
<b>Source:</b>	Mouse
<b>Background:</b>	Microtubules of the eukaryotic cytoskeleton perform essential and diverse functions and are composed of a heterodimer of alpha and beta tubulin. The genes encoding these microtubule constituents are part of the tubulin superfamily, which is composed of six distinct families. Genes from the alpha, beta and gamma tubulin families are found in all eukaryotes. The alpha and beta tubulins represent the major components of microtubules, while gamma tubulin plays a critical role in the nucleation of microtubule assembly. There are multiple alpha and beta tubulin genes and they are highly conserved among and between species. This gene encodes an alpha tubulin that is a highly conserved homolog of a rat testis-specific alpha tubulin. Alternatively spliced transcript variants encoding different isoforms have been found for this gene.

**For Research Use Only**

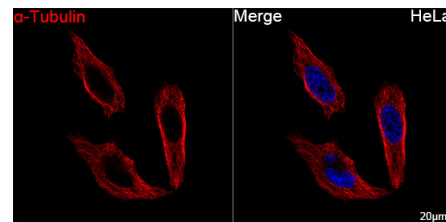
**IMMUNOLOGICAL SCIENCES**



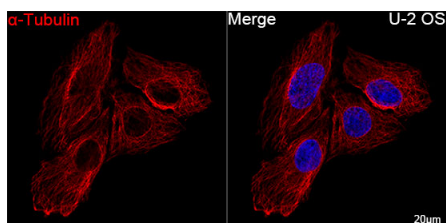
Western blot analysis of various lysates using α-Tubulin Mouse mAb at 1:20000 dilution incubated overnight at 4°C.



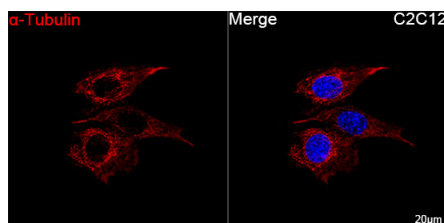
Immunohistochemistry analysis of paraffin-embedded Rat testis tissue using α-Tubulin Mouse mAb at a dilution of 1:1000 (40x lens). High pressure antigen retrieval performed with 0.01M Tris-EDTA Buffer (pH 9.0) prior to IHC staining.



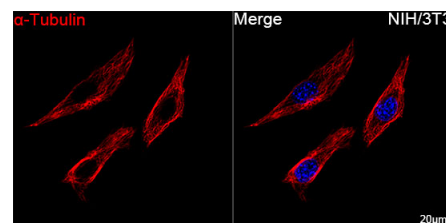
Confocal imaging of HeLa cells using α-Tubulin Mouse mAb (dilution 1:500) followed by a further incubation with Cy3-conjugated Goat anti-Mouse IgG (H+L) (dilution 1:500) (Red). DAPI was used for nuclear staining (Blue). Objective: 100x.



Confocal imaging of U-2 OS cells using α-Tubulin Mouse mAb (further dilution 1:500) followed by a further incubation with Cy3-conjugated Goat anti-Mouse IgG (H+L) (dilution 1:500) (Red). DAPI was used for nuclear staining (Blue). Objective: 100x.

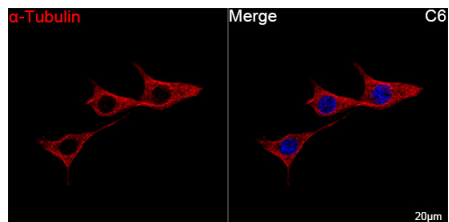


Confocal imaging of C2C12 cells using α-Tubulin Mouse mAb (dilution 1:500) followed by a further incubation with Cy3-conjugated Goat anti-Mouse IgG (H+L) (dilution 1:500) (Red). DAPI was used for nuclear staining (Blue). Objective: 100x.



Confocal imaging of NIH/3T3 cells using α-Tubulin Mouse mAb ( dilution 1:500) followed by a further incubation with Cy3-conjugated Goat anti-Mouse IgG (H+L) (dilution 1:500) (Red). DAPI was used for nuclear staining (Blue). Objective: 100x.

**For Research Use Only**  
**IMMUNOLOGICAL SCIENCES**



Confocal imaging of C6 cells using  
α-Tubulin Mouse mAb (dilution 1:500)  
followed by a further incubation with  
Cy3-conjugated Goat anti-Mouse IgG  
(H+L) (dilution 1:500) (Red). DAPI was  
used for nuclear staining (Blue).  
Objective: 100x.

**For Research Use Only**  
**IMMUNOLOGICAL SCIENCES**