

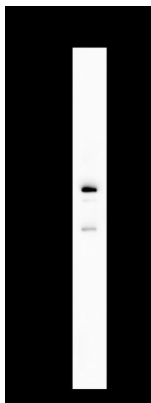


Product name:	Parkin / Park 2 Rabbit Polyclonal Antibody
Cat number:	ABN21149
Conjugate:	Unconjugated
Size:	100 ug
Concentration:	1mg/ml. The concentration of this product may be batch-dependent.
Host:	Rabbit
Isotype:	IgG,Kappa
Immunogen:	Recombinant protein of human Parkin
Reactivity:	Human,Mouse,Rat
Applications:	WB 1:2000-1:10000,ICC/IF 1:200-1:1000,ELISA 1:5000-1:20000,IP 1:50-1:200
Molecular Weight:	52kD
Purification:	Protein A
Form:	Liquid
Buffer:	PBS, 50% glycerol, 0.05% Proclin 300, 0.05%protective protein
Storage:	Aliquot and store at -20°C (valid for 12 months). Avoid freeze/thaw cycles.
Synonyms:	PARK2;PRKN;E3 ubiquitin-protein ligase parkin;Parkinson juvenile disease protein 2;Parkinson disease protein 2
Source:	Rabbit
Background:	Cell localization:Cytoplasm.The precise function of this gene is unknown; however, the encoded protein is a component of a multiprotein E3 ubiquitin ligase complex that mediates the targeting of substrate proteins for proteasomal degradation. Mutations in this gene are known to cause Parkinson disease and autosomal recessive juvenile Parkinson disease. Alternative splicing of this gene produces multiple transcript variants encoding distinct isoforms. Additional splice variants of this gene have been described but currently lack transcript support. [provided by RefSeq, Jul 2008]

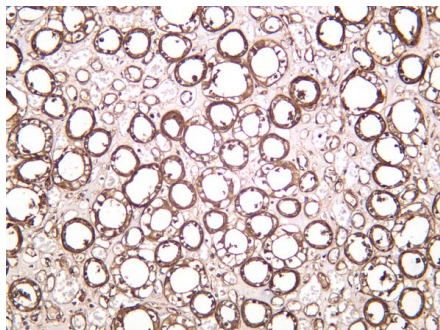
For Research Use Only

IMMUNOLOGICAL SCIENCES

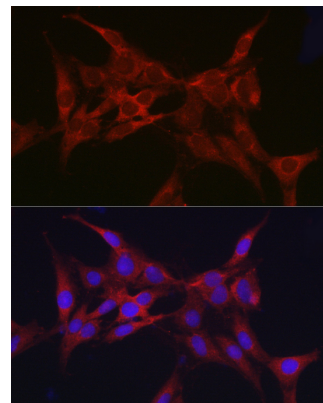
Web-site: <https://immunologicalsciences.com> - E-mail: info@immunologicalsciences.com



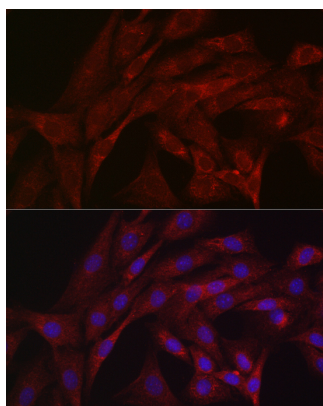
SH-SY5Y cell lysates were separated by 4-20% SDS-PAGE, and the membrane was blotted with Parkin Rabbit Polyclonal Antibody 1:1000. The HRP-conjugated Goat anti-Rabbit IgG(H + L) antibody was used to detect the antibody.



Human kidney was stained with anti-Parkin Rabbit antibody.



Immunofluorescence analysis of C6 cells using Parkin Rabbit pAb at dilution of 1:50 (40x lens). Secondary antibody: Cy3- conjugated Goat anti-Rabbit IgG(H+L) at 1:500 dilution. Blue: DAPI for nuclear staining.



Immunofluorescence analysis of NIH/3T3 cells using Parkin Rabbit pAb at dilution of 1:50 (40x lens). Secondary antibody: Cy3-conjugated Goat anti-Rabbit IgG (H+L) at 1:500 dilution. Blue: DAPI for nuclear staining.

**For Research Use Only
IMMUNOLOGICAL SCIENCES**