

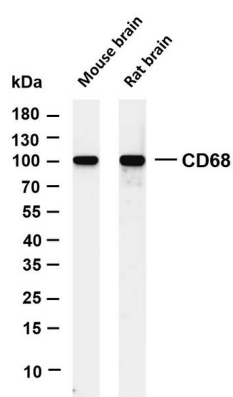


Product name:	CD68 Rabbit Polyclonal Antibody
Cat number:	ABN08435
Conjugate:	Unconjugated
Size:	100 ug
Concentration:	1mg/ml . The concentration of this product may be batch dependent.
Host:	Rabbit
Isotype:	IgG
Immunogen:	A synthetic peptide of mouse CD68
Reactivity:	Mouse,Rat
Applications:	IHC 1:500-1:2000 WB 1:2000-1:10000 IF 1:200-1:1000 ELISA 1:5000-1:20000
Molecular Weight:	37kDa
Purification:	Affinity purification
Form:	Liquid
Buffer:	Rabbit IgG in phosphate buffered saline , pH 7.4, 150mM NaCl, 0.02% New type preservative N and 50% glycerol. Store at +4°C short term. Store at -20°C long term. Avoid freeze / thaw cycle.
Storage:	Aliquot and store at -20°C (valid for 12 months). Avoid freeze/thaw cycles.
Synonyms:	CD68 antigen; CD68 molecule; Gp110; LAMP4; Macrophage antigen CD68 (microsialin); Macrosialin; SCARD1; Scavenger receptor class D member 1
Source:	Rabbit
Background:	CD68 belongs to a family of acidic, highly glycosylated lysosomal glycoproteins (LGPs) that includes lamp-1 and lamp-2. Play a role in phagocytic activities of tissue macrophages, both in intracellular lysosomal metabolism and extracellular cell-cell and cell-pathogen interactions. Could play a role in phagocytic activities of tissue macrophages, both in intracellular lysosomal metabolism and extracellular cell-cell and cell-pathogen interactions. Binds to tissue- and organ-specific lectins or selectins, allowing homing of macrophage subsets to particular sites. Rapid recirculation of CD68 from endosomes and lysosomes to the plasma membrane may allow macrophages to crawl over selectin-bearing substrates or other cells.

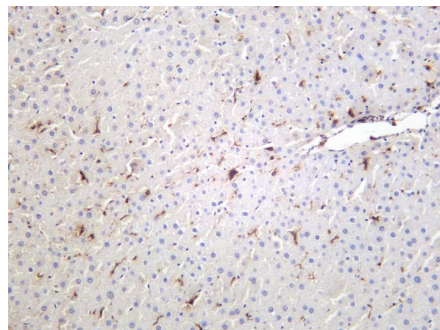
For Research Use Only

IMMUNOLOGICAL SCIENCES

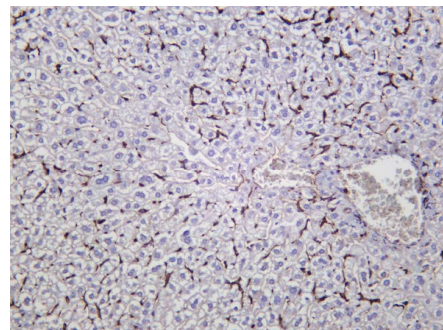
Web-site: <https://immunologicalsciences.com> - E-mail: info@immunologicalsciences.com



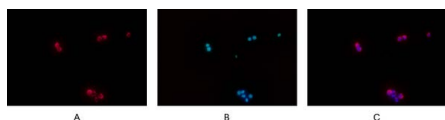
Various whole cell lysates were separated by 4-20% SDS-PAGE, and the membrane was blotted with anti-CD68 antibody. The HRP-conjugated Goat anti-Rabbit IgG(H + L) antibody was used to detect the antibody.



Rat liver was stained with anti-CD68 rabbit antibody



Mouse liver was stained with anti-CD68 Rabbit antibody



Immunofluorescence analysis of RAW264.7. Picture A: CD68 antibody (red). Picture B: DAPI (blue). Picture C: Merge of A+B

For Research Use Only
IMMUNOLOGICAL SCIENCES