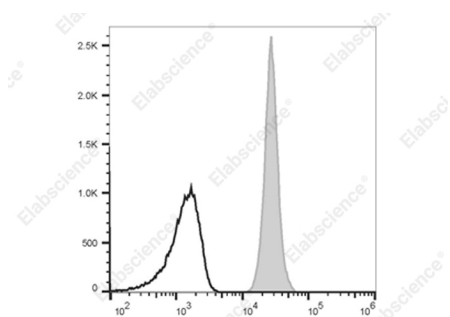

Product name:	Anti-Human CD45 BrightViolet 500 Antibody [HI30]
Cat number:	MAB1137R
Conjugate:	Bright Violet 500 - is designed to be excited by the violet laser (405 nm) and detected using an optical filter centered near 501 nm (e.g., a 525/45 nm bandpass filter).
Size:	100 ug
Clone:	HI30
Concentration:	1mg/ml
Host:	Mouse
Isotype:	Mouse IgG1, κ
Reactivity:	Human
Applications:	FCM Each lot of this antibody is quality control tested by flow cytometric analysis. The amount of the reagent is suggested to be used 5 μ L of antibody per test (million cells in 100 μ L staining volume or per 100 μ L of whole blood). Please check your vial before the experiment. Since applications vary, the appropriate dilutions must be determined for individual use.
Molecular Weight:	180 - 240 kD
Form:	Liquid
Buffer:	Phosphate buffered solution, pH 7.2, containing 0.09% stabilizer
Storage:	Keep as concentrated solution. This product can be stored at 2-8°C for 24 months. Please protected from prolonged exposure to light and do not freeze.
Synonyms:	CD45;L-CA;Ly-5;Ptpnc;Receptor-type tyrosine-protein phosphatase C;T200
Source:	Mouse
Background:	CD45 is a 180 - 240 kD single chain type I membrane glycoprotein also known as leukocyte common antigen (LCA) and T200. It is a tyrosine phosphatase expressed on the plasma membrane of all hematopoietic cells, except erythrocytes or platelets. CD45 is a signaling molecule that regulates a variety of cellular processes including cell growth, differentiation, cell cycle, and oncogenic transformation. CD45 plays a critical role in T and B cell antigen receptor-mediated activation by dephosphorylating substrates including p56Lck, p59Fyn, and other Src family kinases. CD45 non-covalently associates with lymphocyte phosphatase-associated phosphoprotein (LPAP) on T and B lymphocytes. CD45 has been reported to bind galectin-1 and to be associated with several other cell surface antigens including CD1, CD2, CD3, and CD4.

For Research Use Only

IMMUNOLOGICAL SCIENCES



Staining of normal human peripheral blood cells with Violet 500 Anti-Human CD45 Antibody[HI30] (filled gray histogram) or Violet 500 Mouse IgG1, κ Isotype Control (empty black histogram). Cells in the lymphocytes gate were used for analysis.

**For Research Use Only
IMMUNOLOGICAL SCIENCES**