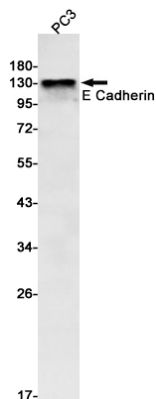


Product name:	E Cadherin Rabbit Monoclonal Antibody
Cat number:	MABN01411
Conjugate:	Unconjugated
Size:	100 ug
Concentration:	1mg/ml. The concentration of this product may be batch-dependent.
Host:	Rabbit
Isotype:	IgG
Immunogen:	A synthetic peptide corresponding to target protein
Reactivity:	Human
Applications:	WB 1:500-1:1000,IHC 1:50-1:100,ICC/IF 1:50-1:200,IP 1:20-1:50
Molecular Weight:	Observed MW: 80-120,135 kDa
Purification:	Affinity Purification
Form:	Liquid
Buffer:	50mM Tris-Glycine(pH 7.4), 0.15M NaCl, 40% Glycerol, 0.01% Sodium azide and 0.05% protective protein
Storage:	Aliquot and store at -20°C (valid for 12 months). Avoid freeze/thaw cycles.
Synonyms:	CDH1; CDHE; UVO; Cadherin-1; CAM 120/80; Epithelial cadherin; E-cadherin; Uvomorulin; CD324
Source:	Rabbit
Background:	CDH1 a single-pass type I membrane protein, and calcium dependent cell adhesion proteins. It is a ligand for integrin alpha-E/beta-7, and it colocalizes with DLG7 at sites of cell-cell contact in intestinal epithelial cells.

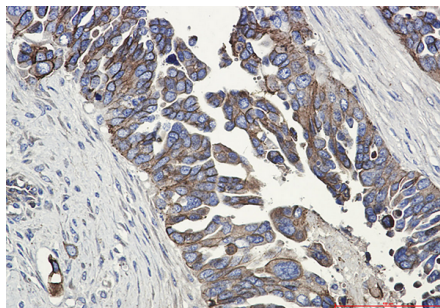
For Research Use Only

IMMUNOLOGICAL SCIENCES

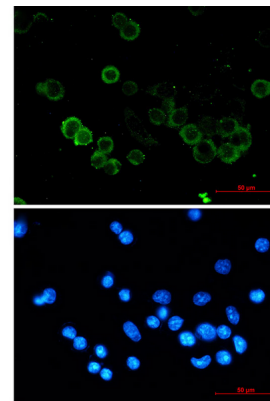
Web-site: <https://immunologicalsciences.com> - E-mail: info@immunologicalsciences.com



Western blot analysis of E Cadherin in PC-3 lysates using E Cadherin antibody.



Immunohistochemistry analysis of paraffin-embedded Human Cholangiocarcinoma using E Cadherin antibody. High-pressure and temperature Sodium Citrate pH 6.0 was used for antigen retrieval.



Immunocytochemistry analysis of E Cadherin (green) in MCF-7 using E Cadherin antibody, and DAPI (blue)

**For Research Use Only
IMMUNOLOGICAL SCIENCES**