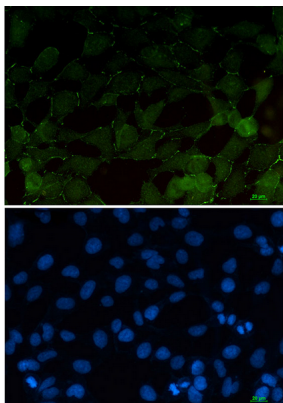


Product name:	beta Catenin Rabbit Monoclonal Antibody
Cat number:	MABN03762
Conjugate:	Unconjugated
Size:	100 ug
Concentration:	1mg/ml. The concentration of this antibody may be batch-dependent.
Host:	Rabbit
Isotype:	IgG
Immunogen:	A synthetic peptide corresponding to target protein
Reactivity:	Human,Mouse,Rat
Applications:	WB 1:500-1:1000,ICC/IF 1:50-1:200
Molecular Weight:	85 kDa
Purification:	Affinity Purification
Form:	Liquid
Buffer:	50mM Tris-Glycine(pH 7.4), 0.15M NaCl, 40% Glycerol, 0.01% Sodium azide and 0.05% protective protein
Storage:	Aliquot and store at -20°C (valid for 12 months). Avoid freeze/thaw cycles.
Synonyms:	CTNNB1; CTNNB; OK/SW-cl.35; Catenin beta-1; Beta-catenin
Source:	Rabbit
Background:	Beta-catenin is an adherens junction protein. Adherens junctions (AJs; also called the zonula adherens) are critical for the establishment and maintenance of epithelial layers, such as those lining organ surfaces. AJs mediate adhesion between cells, communicate a signal that neighboring cells are present, and anchor the actin cytoskeleton. In serving these roles, AJs regulate normal cell growth and behavior.

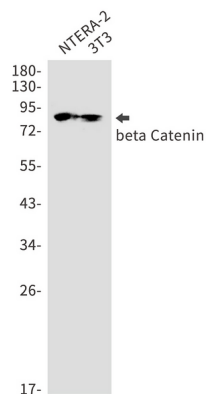
For Research Use Only

IMMUNOLOGICAL SCIENCES

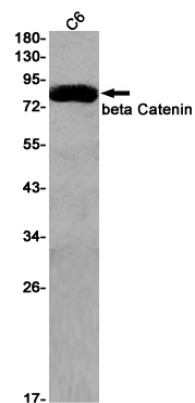
Web-site: <https://immunologicalsciences.com> - E-mail: info@immunologicalsciences.com



Immunocytochemistry analysis of beta Catenin (green) in 293T using beta Catenin antibody, and DAPI (blue).



Western blot analysis of beta Catenin in NTERA-2, 3T3 lysates using beta Catenin antibody.



Western blot analysis of beta Catenin in C6 lysates using beta Catenin antibody

For Research Use Only

IMMUNOLOGICAL SCIENCES