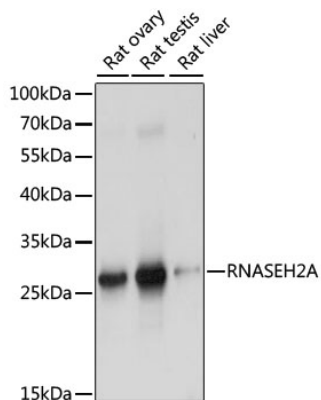


| | |
|--------------------------|--|
| Product name: | RNASEH2A Rabbit Polyclonal Antibody |
| Cat number: | AB15132 |
| Conjugate: | Unconjugated |
| Size: | 100 ug |
| Concentration: | 1mg/ml |
| Host: | Rabbit |
| Isotype: | IgG |
| Immunogen: | Recombinant protein (or fragment). This information is considered to be commercially sensitive. |
| Reactivity: | Human, Rat |
| Applications: | WB 1:500 - 1:2000 IF/ICC 1:50 - 1:200 ELISA Recommended starting concentration is 1 µg/mL. Please optimize the concentration based on your specific assay requirements. |
| Molecular Weight: | 33kDa |
| Purification: | Affinity purification |
| Form: | Liquid |
| Buffer: | PBS with 0.01% thimerosal, 50% glycerol, pH7.3 |
| Storage: | Store at -20°C. Avoid freeze / thaw cycles. |
| Synonyms: | AGS4; JUNB; RNHL; RNHIA; THSD8; RNASEHI; RNASEH2A |
| Source: | Rabbit |
| Background: | The protein encoded by this gene is a component of the heterotrimeric type II ribonuclease H enzyme (RNaseH2). RNaseH2 is the major source of ribonuclease H activity in mammalian cells and endonucleolytically cleaves ribonucleotides. It is predicted to remove Okazaki fragment RNA primers during lagging strand DNA synthesis and to excise single ribonucleotides from DNA-DNA duplexes. Mutations in this gene cause Aicardi-Goutieres Syndrome (AGS), an autosomal recessive neurological disorder characterized by progressive microcephaly and psychomotor retardation, intracranial calcifications, elevated levels of interferon-alpha and white blood cells in the cerebrospinal fluid. |

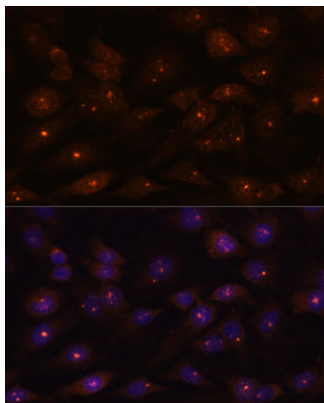
For Research Use Only

IMMUNOLOGICAL SCIENCES

Web-site: <https://immunologicalsciences.com> - E-mail: info@immunologicalsciences.com



Western blot analysis of various lysates using RNASEH2A Rabbit pAb at 1:1000 dilution. Secondary antibody: HRP-conjugated Goat anti-Rabbit IgG (H+L) at 1:10000 dilution. Lysates/proteins: 25µg per lane. Blocking buffer: 3% nonfat dry milk in TBST. Detection: ECL West Pico Plus. Exposure time: 1s.



Immunofluorescence analysis of C6 cells using RNASEH2A Rabbit pAb at dilution of 1:100. Secondary antibody: Cy3-conjugated Goat anti-Rabbit IgG (H+L) at 1:500 dilution. Blue: DAPI for nuclear staining.

For Research Use Only

IMMUNOLOGICAL SCIENCES

Web-site: <https://immunologicalsciences.com> - E-mail: info@immunologicalsciences.com