

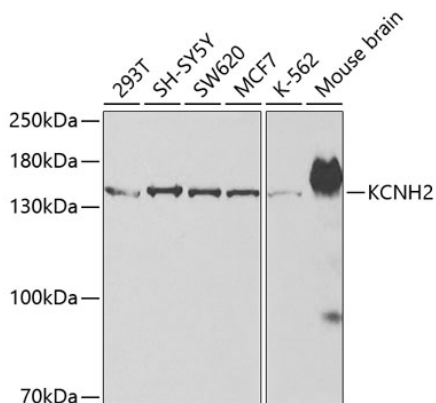


Product name:	KCNH2 Rabbit Polyclonal Antibody
Cat number:	AB2968
Conjugate:	Unconjugated
Size:	100 ug
Concentration:	1mg/ml
Host:	Rabbit
Isotype:	IgG
Immunogen:	Synthetic peptide. This information is considered to be commercially sensitive.
Reactivity:	Human, Mouse
Applications:	WB 1:500 - 1:2000 IHC-P 1:50 - 1:200 ELISA Recommended starting concentration is 1 µg/mL. Please optimize the concentration based on your specific assay requirements. IF-P 1:50 - 1:200
Molecular Weight:	148kDa
Purification:	Affinity purification
Form:	Liquid
Buffer:	PBS containing 50% glycerol, preserved with proclin300 or sodium azide (as specified on the Certificate of Analysis), pH 7.3.
Storage:	Store at -20°C. Avoid freeze / thaw cycles.
Synonyms:	ERG1; HERG; LQT2; SQT1; ERG-1; H-ERG; HERG1; Kv11.1; KCNH2
Source:	Rabbit
Background:	This gene encodes a component of a voltage-activated potassium channel found in cardiac muscle, nerve cells, and microglia. Four copies of this protein interact with one copy of the KCNE2 protein to form a functional potassium channel. Mutations in this gene can cause long QT syndrome type 2 (LQT2). Transcript variants encoding distinct isoforms have been identified.

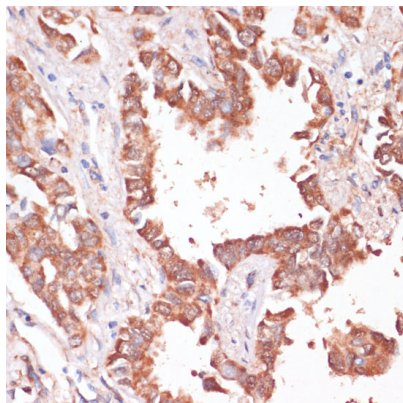
For Research Use Only

IMMUNOLOGICAL SCIENCES

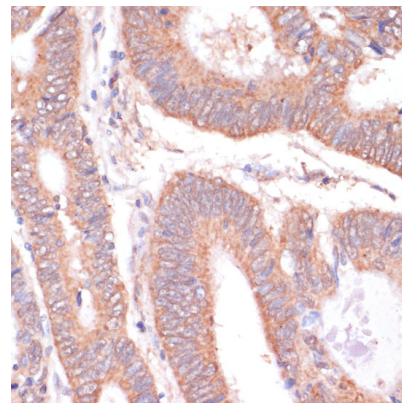
Web-site: <https://immunologicalsciences.com> - E-mail: info@immunologicalsciences.com



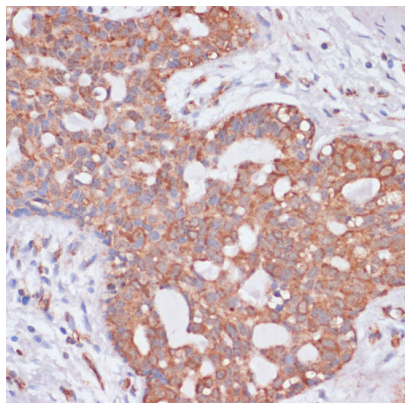
Western blot analysis of various lysates using KCNH2 Rabbit Polyclonal Antibody at 1:500 dilution.



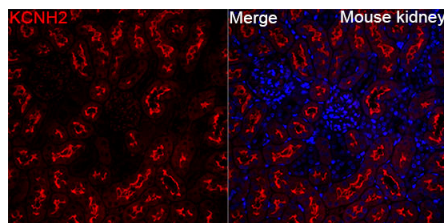
Immunohistochemistry analysis of paraffin-embedded Human lung cancer using KCNH2 Rabbit Polyclonal Antibody at dilution of 1:100 (40x lens). Microwave antigen retrieval performed with 0.01M PBS Buffer (pH 7.2) prior to IHC staining.



Immunohistochemistry analysis of paraffin-embedded Human colon carcinoma using KCNH2 Rabbit Polyclonal Antibody at dilution of 1:100 (40x lens). Microwave antigen retrieval performed with 0.01M PBS Buffer (pH 7.2) prior to IHC staining.



Immunohistochemistry analysis of paraffin-embedded Human breast cancer using KCNH2 Rabbit Polyclonal Antibody at dilution of 1:100 (40x lens). Microwave antigen retrieval performed with 0.01M PBS Buffer (pH 7.2) prior to IHC staining.



Immunofluorescence analysis of Mouse kidney tissue using KCNH2 Rabbit Polyclonal Antibody at a dilution of 1:200 (40x lens). Secondary antibody: Cy3-conjugated Goat anti-Rabbit IgG (H+L) at 1:500 dilution. Blue: DAPI for nuclear staining. High pressure antigen retrieval performed with 0.01M Citrate Buffer (pH 6.0) prior to IF staining.

For Research Use Only
IMMUNOLOGICAL SCIENCES