

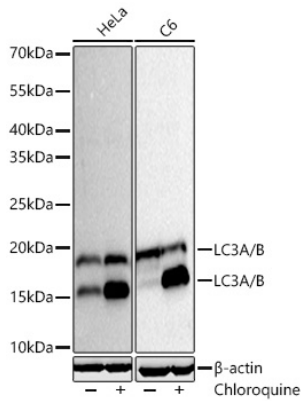


Product name:	LC3A/LC3B Rabbit Monoclonal Antibody
Cat number:	AB27200
Conjugate:	Unconjugated
Size:	100 ug
Concentration:	1mg/ml
Host:	Rabbit
Isotype:	IgG
Immunogen:	Synthetic peptide. This information is considered to be commercially sensitive.
Reactivity:	Human,Mouse,Rat
Applications:	WB 1:10000 - 1:20000 IHC-P 1:2000 - 1:8000 IF/ICC 1:200 - 1:800 ELISA Recommended starting concentration is 1 µg/mL. Please optimize the concentration based on your specific assay requirements.
Molecular Weight:	14kDa/16kDa
Purification:	Affinity purification
Buffer:	PBS with 0.09% Sodium azide,0.05% BSA,50% glycerol,pH7.3
Storage:	Store at -20°C. Avoid freeze / thaw cycles.
Synonyms:	LC3; LC3A; ATG8E; MAP1ALC3; MAP1BLC3; LC3A/B; LC3B
Source:	Rabbit
Background:	MAP1A and MAP1B are microtubule-associated proteins which mediate the physical interactions between microtubules and components of the cytoskeleton. MAP1A and MAP1B each consist of a heavy chain subunit and multiple light chain subunits. The protein encoded by this gene is one of the light chain subunits and can associate with either MAP1A or MAP1B. Two transcript variants encoding different isoforms have been found for this gene. The expression of variant 1 is suppressed in many tumor cell lines, suggesting that may be involved in carcinogenesis.

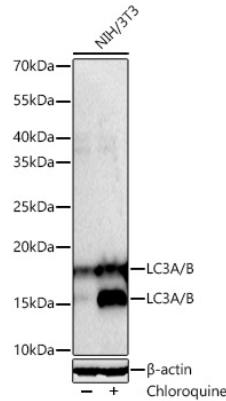
For Research Use Only

IMMUNOLOGICAL SCIENCES

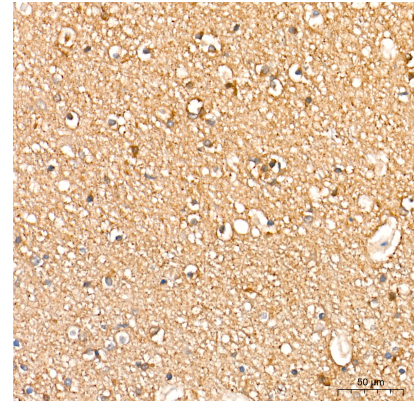
Web-site: <https://immunologicalsciences.com> - E-mail: info@immunologicalsciences.com



Western blot analysis of various lysates using LC3A/LC3B Rabbit Monoclonal Antibody at 1:10000 dilution incubated at room temperature for 1.5 hours. HeLa and C6 cells were treated with Chloroquine (50 μ M) at 37°C for 20 hours.

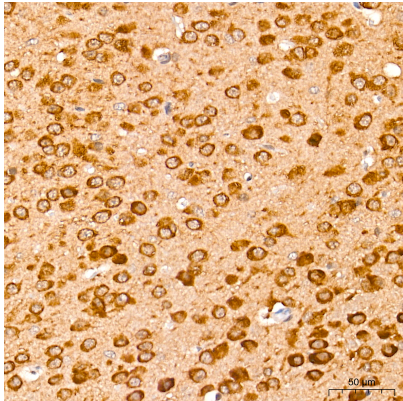


Western blot analysis of lysates from NIH/3T3 cells using LC3A/LC3B Rabbit Monoclonal Antibody at 1:10000 dilution incubated at room temperature for 1.5 hours. NIH/3T3 cells were treated with Chloroquine (50 μ M) at 37°C for 20 hours.

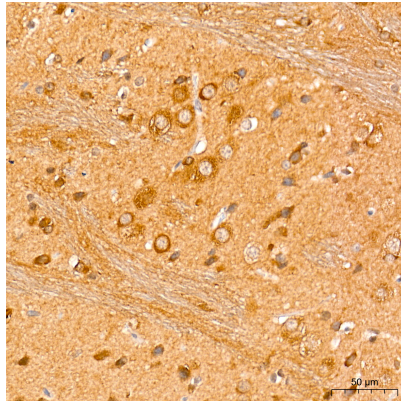


Immunohistochemistry analysis of paraffin-embedded Human brain tissue using LC3A/LC3B Rabbit Monoclonal Antibody at a dilution of 1:5000 (40x lens). High pressure antigen retrieval performed with 0.01M Citrate Buffer (pH 6.0) prior to IHC staining.

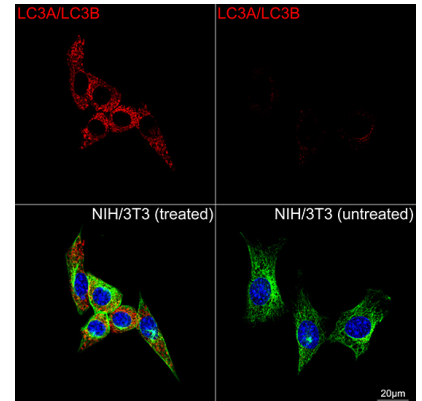
For Research Use Only
IMMUNOLOGICAL SCIENCES



Immunohistochemistry analysis of paraffin-embedded Mouse brain tissue using LC3A/LC3B Rabbit Monoclonal Antibody at a dilution of 1:5000 (40x lens). High pressure antigen retrieval performed with 0.01M Citrate Buffer (pH 6.0) prior to IHC staining.



Immunohistochemistry analysis of paraffin-embedded Rat brain tissue using LC3A/LC3B Rabbit Monoclonal Antibody at a dilution of 1:5000 (40x lens). High pressure antigen retrieval performed with 0.01M Citrate Buffer (pH 6.0) prior to IHC staining.



Confocal imaging of NIH/3T3 cells (treated with chloroquine) and NIH/3T3 cells (untreated) using LC3A/LC3B Rabbit Monoclonal Antibody (dilution 1:200) followed by a further incubation with Cy3 Goat Anti-Rabbit IgG (H+L) (dilution 1:500) (Red). The cells were counterstained with α -Tubulin Mouse mAb (dilution 1:400) followed by incubation with AF488-conjugated Goat Anti-Mouse IgG (H+L) Ab (dilution 1:500) (Green). DAPI was used for nuclear staining (Blue). Objective: 100x.

**For Research Use Only
IMMUNOLOGICAL SCIENCES**