

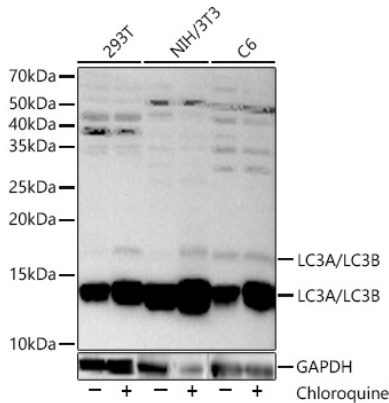


Product name:	LC3A/LC3B Rabbit pAb
Cat number:	AB5618
Conjugate:	Unconjugated
Size:	100 ug
Concentration:	1mg/ml
Host:	Rabbit
Isotype:	IgG
Immunogen:	Synthetic peptide. This information is considered to be commercially sensitive.
Reactivity:	Human,Mouse,Rat
Applications:	WB 1:500 - 1:5000 IHC-P 1:50 - 1:200 IF/ICC 1:50 - 1:200 ELISA Recommended starting concentration is 1 µg/mL. Please optimize the concentration based on your specific assay requirements.
Molecular Weight:	14kDa/16kDa
Purification:	Affinity purification
Form:	Liquid
Buffer:	PBS with 0.09% Sodium azide,50% glycerol,pH7.3
Storage:	Store at -20°C. Avoid freeze / thaw cycles.
Synonyms:	MAP1LC3B; ATG8F; LC3B; MAP1A/1BLC3; MAP1LC3B-a; MAP1LC3A; ATG8E; LC3; LC3A; MAP1ALC3; MAP1BLC3; LC3A/LC3B
Source:	Rabbit
Background:	MAP1A and MAP1B are microtubule-associated proteins which mediate the physical interactions between microtubules and components of the cytoskeleton. MAP1A and MAP1B each consist of a heavy chain subunit and multiple light chain subunits. The protein encoded by this gene is one of the light chain subunits and can associate with either MAP1A or MAP1B. Two transcript variants encoding different isoforms have been found for this gene. The expression of variant 1 is suppressed in many tumor cell lines, suggesting that may be involved in carcinogenesis.

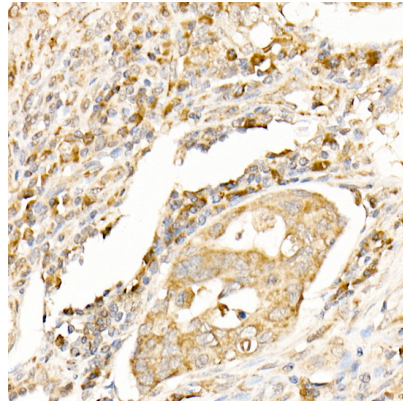
For Research Use Only

IMMUNOLOGICAL SCIENCES

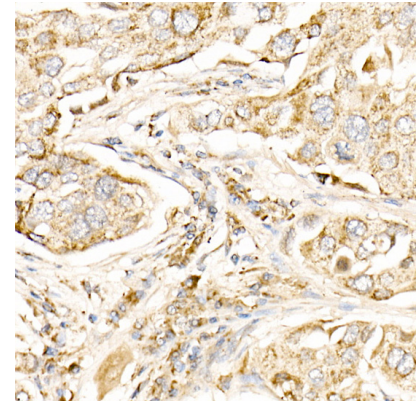
Web-site: <https://immunologicalsciences.com> - E-mail: info@immunologicalsciences.com



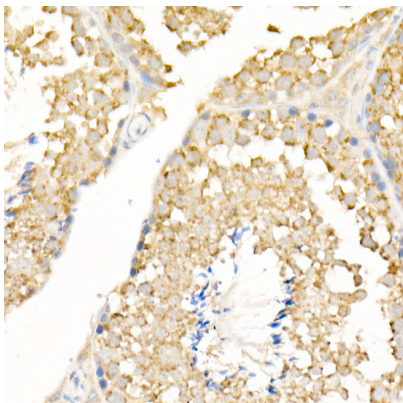
Western blot analysis of various lysates, using LC3A/LC3B Rabbit pAb at 1:2000 dilution. 293T,NIH/3T3 and C6 cells were treated with Chloroquine (50 μ M) at 37°C for 20 hours.



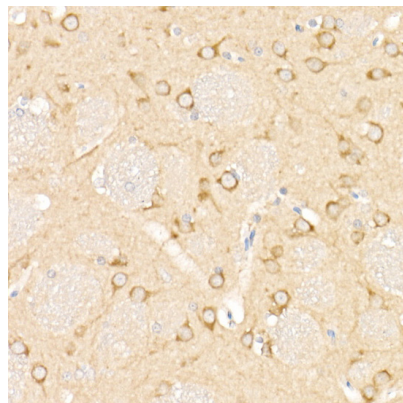
Immunohistochemistry analysis of paraffin-embedded Human colon carcinoma using LC3A/LC3B Rabbit pAb at dilution of 1:100 (40x lens). High pressure antigen retrieval performed with 0.01M Citrate buffer (pH 6.0) prior to IHC staining.



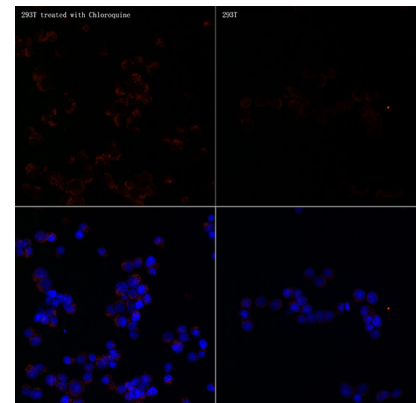
Immunohistochemistry analysis of paraffin-embedded Human lung cancer using LC3A/LC3B Rabbit pAb at dilution of 1:100 (40x lens). High pressure antigen retrieval performed with 0.01M Citrate buffer (pH 6.0) prior to IHC staining.



Immunohistochemistry analysis of paraffin-embedded Mouse testis using LC3A/LC3B Rabbit pAb at dilution of 1:100 (40x lens). High pressure antigen retrieval performed with 0.01M Citrate buffer (pH 6.0) prior to IHC staining.



Immunohistochemistry analysis of paraffin-embedded Rat brain using LC3A/LC3B Rabbit pAb at dilution of 1:100 (40x lens). High pressure antigen retrieval performed with 0.01M Citrate buffer (pH 6.0) prior to IHC staining.



Immunofluorescence analysis of 293T Treated with Chloroquine and 293T cells using LC3A/LC3B Rabbit pAb at dilution of 1:100 (40x lens). Secondary antibody: Cy3-conjugated Goat anti-Rabbit IgG (H+L) at 1:500 dilution. Blue: DAPI for nuclear staining.

**For Research Use Only
IMMUNOLOGICAL SCIENCES**