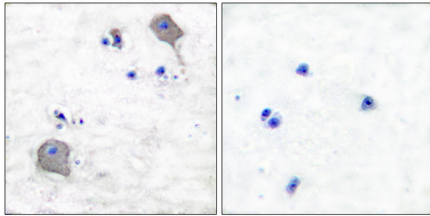


Product name:	Claudin-5 Rabbit Polyclonal Antibody
Cat number:	ABN08911
Conjugate:	Unconjugated
Size:	100 ug
Concentration:	1mg/ml
Host:	Rabbit
Isotype:	IgG
Immunogen:	The antiserum was produced against synthesized peptide derived from human Claudin 5. AA range:169-218
Reactivity:	Human,Mouse,Rat
Applications:	WB 1:500-1:2000,IHC 1:100-1:300,ICC/IF 1:100-1:300,ELISA 1:10000-1:20000
Molecular Weight:	22kDa
Purification:	Affinity purification
Form:	Liquid
Buffer:	Liquid in PBS containing 50% glycerol, 0.5% protective protein and 0.02% New type preservative N.
Storage:	Aliquot and store at -20°C (valid for 12 months). Avoid freeze/thaw cycles.
Synonyms:	CLDN5; AWAL; TMVCF; Claudin-5; Transmembrane protein deleted in VCFS; TMDVCF
Source:	Rabbit
Background:	This gene encodes a member of the claudin family. Claudins are integral membrane proteins and components of tight junction strands. Tight junction strands serve as a physical barrier to prevent solutes and water from passing freely through the paracellular space between epithelial or endothelial cell sheets. Mutations in this gene have been found in patients with velocardiofacial syndrome. Alternatively spliced transcript variants encoding the same protein have been found for this gene. [provided by RefSeq, Aug 2008],function:Plays a major role in tight junction-specific obliteration of the intercellular space.,similarity:Belongs to the claudin family.,subunit:Directly interacts with TJP1/ZO-1, TJP2/ZO-2 and TJP3/ZO-3. Interacts with MPDZ.

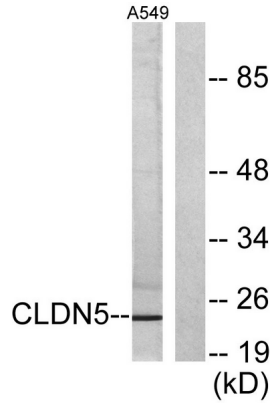
For Research Use Only

IMMUNOLOGICAL SCIENCES

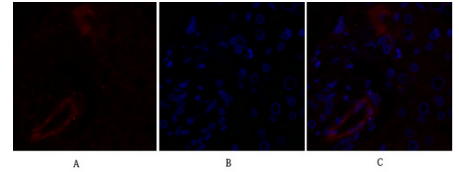
Web-site: <https://immunologicalsciences.com> - E-mail: info@immunologicalsciences.com



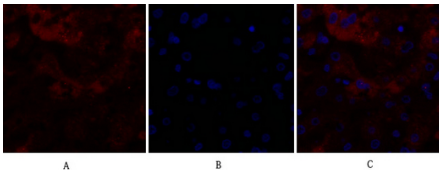
Immunohistochemistry analysis of paraffin-embedded human brain tissue, using Claudin 5 Antibody. The picture on the right is blocked with the synthesized peptide.



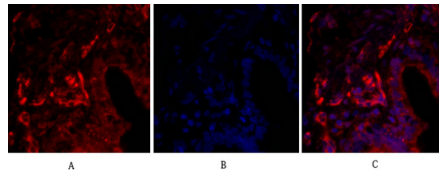
Western blot analysis of lysates from A549 cells, using Claudin 5 Antibody. The lane on the right is blocked with the synthesized peptide.



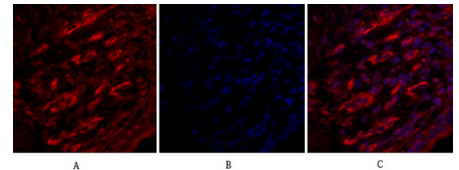
Immunofluorescence analysis of human-liver tissue. 1, Claudin-5 Polyclonal Antibodyred was diluted at 1:2004°C, overnight. 2, Cy3 labeled Secondary antibody was diluted at 1:300room temperature, 50min.3, Picture B: DAPIblue 10min. Picture A: Target. Picture B: DAPI. Picture C: merge of A+B



Immunofluorescence analysis of human-liver tissue. 1, Claudin-5 Polyclonal Antibodyred was diluted at 1:2004°C, overnight. 2, Cy3 labeled Secondary antibody was diluted at 1:300room temperature, 50min.3, Picture B: DAPIblue 10min. Picture A: Target. Picture B: DAPI. Picture C: merge of A+B



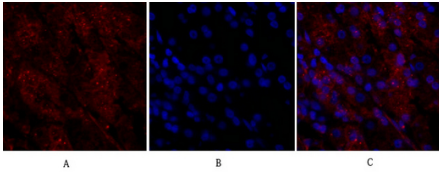
Immunofluorescence analysis of human-lung tissue. 1, Claudin-5 Polyclonal Antibodyred was diluted at 1:2004°C, overnight. 2, Cy3 labeled Secondary antibody was diluted at 1:300room temperature, 50min.3, Picture B: DAPIblue 10min. Picture A: Target. Picture B: DAPI. Picture C: merge of A+B



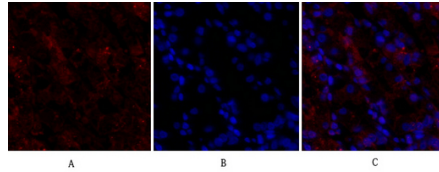
Immunofluorescence analysis of human-lung tissue. 1, Claudin-5 Polyclonal Antibodyred was diluted at 1:2004°C, overnight. 2, Cy3 labeled Secondary antibody was diluted at 1:300room temperature, 50min.3, Picture B: DAPIblue 10min. Picture A: Target. Picture B: DAPI. Picture C: merge of A+B

For Research Use Only

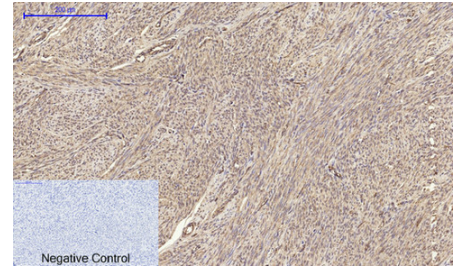
IMMUNOLOGICAL SCIENCES



Immunofluorescence analysis of human-stomach tissue. 1, Claudin-5 Polyclonal Antibody red was diluted at 1:2004°C, overnight. 2, Cy3 labeled Secondary antibody was diluted at 1:300 room temperature, 50 min. 3, Picture B: DAPI blue 10 min. Picture A: Target. Picture B: DAPI. Picture C: merge of A+B



Immunofluorescence analysis of human-stomach tissue. 1, Claudin-5 Polyclonal Antibody red was diluted at 1:2004°C, overnight. 2, Cy3 labeled Secondary antibody was diluted at 1:300 room temperature, 50 min. 3, Picture B: DAPI blue 10 min. Picture A: Target. Picture B: DAPI. Picture C: merge of A+B



Immunohistochemical analysis of paraffin-embedded Human-uterus tissue. 1, Claudin-5 Polyclonal Antibody was diluted at 1:2004°C, overnight. 2, Sodium citrate pH 6.0 was used for antibody retrieval >98°C, 20 min. 3, Secondary antibody was diluted at 1:200 room temperature, 30 min. Negative control was used by secondary antibody only.

For Research Use Only

IMMUNOLOGICAL SCIENCES

Web-site: <https://immunologicalsciences.com> - E-mail: info@immunologicalsciences.com