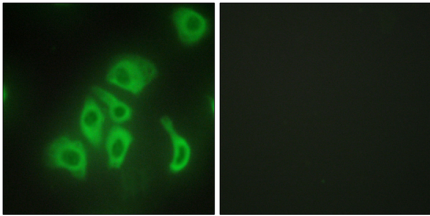

Product name:	TNF- α Rabbit Polyclonal Antibody BSA Free
Cat number:	ABN19095
Conjugate:	Unconjugated
Size:	100 ug
Concentration:	1mg/ml
Host:	Rabbit
Isotype:	IgG
Immunogen:	The antiserum was produced against synthesized peptide derived from human TNFA. AA range:141-190
Reactivity:	Human,Mouse,Rat
Applications:	WB 1:500-1:2000,IHC 1:100-1:300,ICC/IF 1:100-1:300,ELISA 1:10000-1:20000
Molecular Weight:	16kDa
Purification:	Affinity purification
Form:	Liquid
Buffer:	Liquid in PBS containing 50% glycerol, 0.5% protective protein and 0.02% New type preservative N. BSA Free.
Storage:	Aliquot and store at -20°C (valid for 12 months). Avoid freeze/thaw cycles.
Synonyms:	TNF; TNFA; TNFSF2; Tumor necrosis factor; Cachectin; TNF-alpha; Tumor necrosis factor ligand superfamily member 2; TNF-a
Source:	Rabbit
Background:	This gene encodes a multifunctional proinflammatory cytokine that belongs to the tumor necrosis factor (TNF) superfamily. This cytokine is mainly secreted by macrophages. It can bind to, and thus functions through its receptors TNFRSF1A/TNFR1 and TNFRSF1B/TNFR. This cytokine is involved in the regulation of a wide spectrum of biological processes including cell proliferation, differentiation, apoptosis, lipid metabolism, and coagulation. This cytokine has been implicated in a variety of diseases, including autoimmune diseases, insulin resistance, and cancer. Knockout studies in mice also suggested the neuroprotective function of this cytokine.

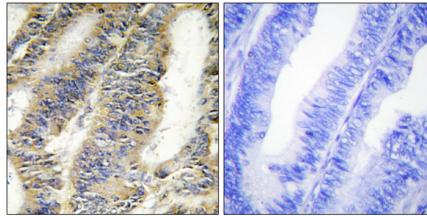
For Research Use Only

IMMUNOLOGICAL SCIENCES

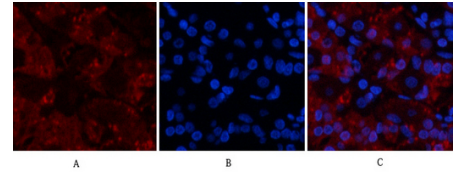
Web-site: <https://immunologicalsciences.com> - E-mail: info@immunologicalsciences.com



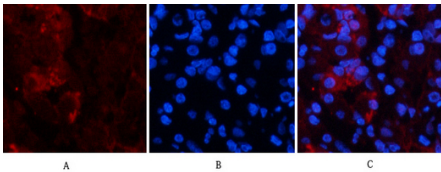
Immunofluorescence analysis of HepG2 cells, using TNFA Antibody. The picture on the right is blocked with the synthesized peptide.



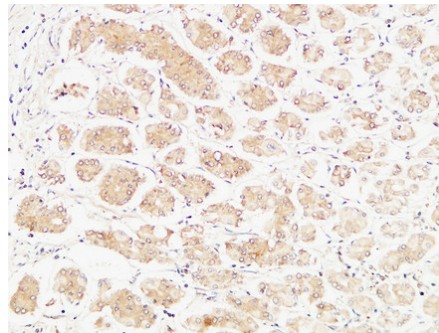
Immunohistochemistry analysis of paraffin-embedded human colon carcinoma tissue, using TNFA Antibody. The picture on the right is blocked with the synthesized peptide.



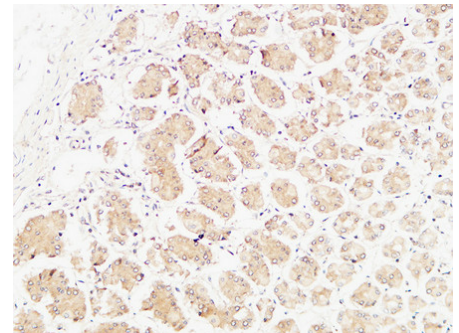
Immunofluorescence analysis of human-stomach tissue. 1, TNF- α Polyclonal Antibodyred was diluted at 1:2004°C, overnight. 2, Cy3 labeled Secondary antibody was diluted at 1:300room temperature, 50min.3, Picture B: DAPIblue 10min. Picture A: Target. Picture B: DAPI. Picture C: merge of A+B



Immunofluorescence analysis of human-stomach tissue. 1, TNF- α Polyclonal Antibodyred was diluted at 1:2004°C, overnight. 2, Cy3 labeled Secondary antibody was diluted at 1:300room temperature, 50min.3, Picture B: DAPIblue 10min. Picture A: Target. Picture B: DAPI. Picture C: merge of A+B



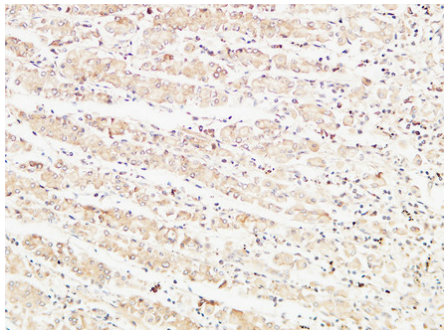
Western Blot analysis of various cells using TNF- α Polyclonal Antibody. Secondary antibody was diluted at 1:20000



Immunohistochemical analysis of paraffin-embedded Human stomach. 1, Antibody was diluted at 1:1004°, overnight. 2, High-pressure and temperature EDTA, pH8.0 was used for antigen retrieval. 3, Secondary antibody was diluted at 1:200room temperature, 30min.

For Research Use Only

IMMUNOLOGICAL SCIENCES



Immunohistochemical analysis of paraffin-embedded Human stomach. 1, Antibody was diluted at 1:1004^o, overnight. 2, High-pressure and temperature EDTA, pH8.0 was used for antigen retrieval. 3, Secondary antibody was diluted at 1:200 room temperature, 30min.

For Research Use Only
IMMUNOLOGICAL SCIENCES