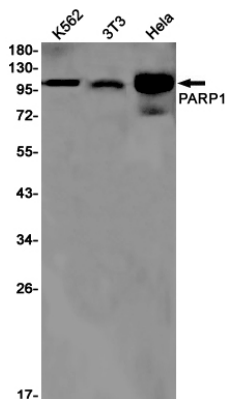


Product name:	PARP1 Rabbit Monoclonal Antibody
Cat number:	MABN02401
Conjugate:	Unconjugated
Size:	100 ug
Concentration:	1 mg/ml
Host:	Rabbit
Isotype:	IgG
Immunogen:	A synthetic peptide of human PARP
Reactivity:	Human,Mouse,Rat
Applications:	WB 1:500-1:1000,IHC 1:50-1:100,ICC/IF 1:50-1:200
Molecular Weight:	Observed MW: 116,89 kDa
Purification:	Affinity Purification
Form:	Liquid
Buffer:	50mM Tris-Glycine(pH 7.4), 0.15M NaCl, 40% Glycerol, 0.01% Sodium azide and 0.05% protective protein
Storage:	Aliquot and store at -20°C (valid for 12 months). Avoid freeze/thaw cycles.
Synonyms:	PARP1; ADPRT; PPOL; Poly [ADP-ribose] polymerase 1; PARP-1; ADP-ribosyltransferase diphtheria toxin-like 1; ARTD1; NAD(+) ADP-ribosyltransferase 1; ADPRT 1; Poly[ADP-ribose] synthase 1
Source:	Rabbit
Background:	Involved in the base excision repair (BER) pathway, by catalyzing the poly(ADP-ribosylation) of a limited number of acceptor proteins involved in chromatin architecture and in DNA metabolism. This modification follows DNA damages and appears as an obligatory step in a detection/signaling pathway leading to the reparation of DNA strand breaks.

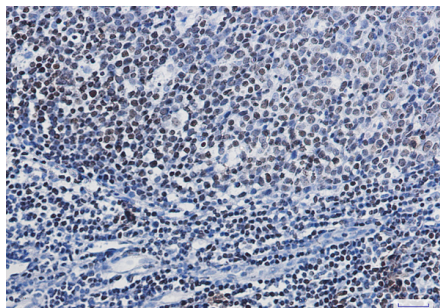
For Research Use Only

IMMUNOLOGICAL SCIENCES

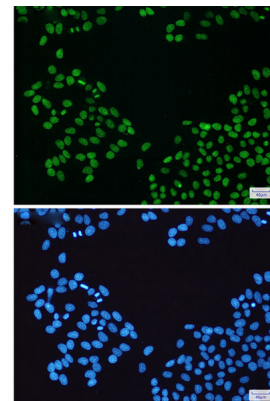
Web-site: <https://immunologicalsciences.com> - E-mail: info@immunologicalsciences.com



Western blot analysis of PARP1 in K562, 3T3, HeLa lysates using PARP1 antibody.



Immunohistochemistry analysis of paraffin-embedded Human tonsil using PARP1 antibody. High-pressure and temperature Sodium Citrate pH 6.0 was used for antigen retrieval.



Immunocytochemistry analysis of PARP1 (green) in HeLa using PARP1 antibody, and DAPI (blue)

**For Research Use Only
IMMUNOLOGICAL SCIENCES**