



---

<b>Product name:</b>	Recombinant Mouse EGF Protein
<b>Cat number:</b>	GRF01684
<b>Conjugate:</b>	Unconjugated
<b>Size:</b>	100 ug
<b>Concentration:</b>	0.1-0.5 mg/mL
<b>Host:</b>	Pichia
<b>Molecular Weight:</b>	6045-Da
<b>Purification:</b>	≥ 95 % as determined by SDS-PAGE
<b>Form:</b>	Lyophilized
<b>Buffer:</b>	PBS, pH 7.4
<b>Storage:</b>	Store at -20°C. Store the lyophilized protein at -20°C to -80 °C up to 1 year from the date of receipt. After reconstitution, the protein solution is stable at -20°C for 3 months, at 2-8°C for up to 1 week. Avoid repeated freeze/thaw cycles.
<b>Synonyms:</b>	beta-urogastrone; EGF; epidermal growth factor (beta-urogastrone); epidermal growth factor; HOMG4; pro-epidermal growth factor; URG; Urogastrone
<b>Source:</b>	Pichia
<b>Bio-Activity:</b>	Measured in a cell proliferation assay using 4MBr 5 rhesus monkey epithelial cells. The ED 50 for this effect is 0.16-0.63 ng/mL, corresponding to a specific activity of 1.59×10 <sup>6</sup> ~6.25×10 <sup>6</sup> units/mg.
<b>Endotoxin:</b>	< 1 EU/μg of the protein by LAL method
<b>Formulation:</b>	Lyophilized from a 0.22 μm filtered solution of PBS, pH 7.4.
<b>Reconstitution:</b>	Centrifuge the vial before opening. Reconstitute to a concentration of 0.1-0.5 mg/mL in sterile distilled water. Avoid vortex or vigorously pipetting the protein. For long term storage, it is recommended to add a carrier protein or stabilizer (e.g. 0.1% BSA, 5% HSA, 10% FBS or 5% Trehalose), and aliquot the reconstituted protein solution to minimize free-thaw cycles.
<b>Description:</b>	EGF is the founding member of the EGF-family of proteins. Members of this protein family have highly similar structural and functional characteristics. EGF contains 9 EGF-like domains and 9 LDL-receptor class B repeats. Human EGF is a 6045-Da protein with 53 amino acid residues and three intramolecular disulfide bonds. As a low-molecular-weight polypeptide, EGF was first purified from the mouse submandibular gland, but since then it was found in many human tissues including submandibular gland, parotid gland.
<b>Background:</b>	EGF is the founding member of the EGF-family of proteins. Members of this protein family have highly similar structural and functional

**For Research Use Only**

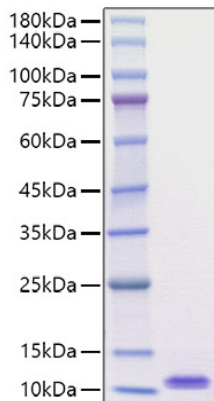
**IMMUNOLOGICAL SCIENCES**

characteristics. EGF contains 9 EGF-like domains and 9 LDL-receptor class B repeats. Human EGF is a 6045-Da protein with 53 amino acid residues and three intramolecular disulfide bonds. As a low-molecular-weight polypeptide, EGF was first purified from the mouse submandibular gland, but since then it was found in many human tissues including submandibular gland, parotid gland.

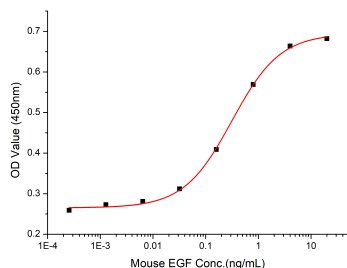
**For Research Use Only**

**IMMUNOLOGICAL SCIENCES**

Web-site: <https://immunologicalsciences.com> - E-mail: [info@immunologicalsciences.com](mailto:info@immunologicalsciences.com)



Recombinant Mouse EGF Protein was Measured in a cell proliferation assay determined by SDS-PAGE under using 4MBr 5 rhesus monkey reducing conditions with Coomassie epithelial cells.



The ED50 for this effect is 0.16-0.63 ng/mL, corresponding to a specific activity of  $1.59 \times 10^6$ – $6.25 \times 10^6$  units/mg.

**For Research Use Only**

**IMMUNOLOGICAL SCIENCES**