

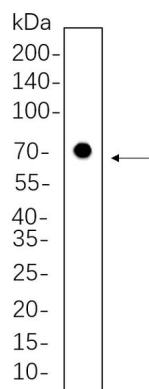


Product name:	Nrf1 Rabbit Monoclonal Antibody
Cat number:	MABN21142
Conjugate:	Unconjugated
Size:	100 ug
Concentration:	1mg/ml
Host:	Rabbit
Isotype:	IgG,Kappa
Immunogen:	A synthetic peptide of human NRF1
Reactivity:	Human,Mouse,Rat
Applications:	WB 1:2000-1:10000,IHC 1:200-1:1000,ICC/IF 1:200-1:1000,ELISA 1:5000-1:20000,IP 1:50-1:200
Molecular Weight:	Calculated MW:54kD;Observed MW:68kD
Purification:	Protein A
Form:	Liquid
Buffer:	PBS, 50% glycerol, 0.05% Proclin 300, 0.05%protective protein
Storage:	Aliquot and store at -20°C (valid for 12 months). Avoid freeze/thaw cycles.
Synonyms:	Nuclear respiratory factor 1;NRF-1;Alpha palindromic-binding protein;Alpha-pal
Source:	Rabbit
Background:	Cell localization:Nucleus.This gene encodes a protein that homodimerizes and functions as a transcription factor which activates the expression of some key metabolic genes regulating cellular growth and nuclear genes required for respiration, heme biosynthesis, and mitochondrial DNA transcription and replication. The protein has also been associated with the regulation of neurite outgrowth. Alternative splicing results in multiple transcript variants. Confusion has occurred in bibliographic databases due to the shared symbol of NRF1 for this gene and for "nuclear factor (erythroid-derived 2)-like 1" which has an official symbol of NFE2L1. [provided by RefSeq, May 2014]

For Research Use Only

IMMUNOLOGICAL SCIENCES

Web-site: <https://immunologicalsciences.com> - E-mail: info@immunologicalsciences.com



Hela whole cell lysates were separated by 10% SDS-PAGE, and the membrane was blotted with Nrf1 Rabbit Monoclonal Antibody(1:1000). The HRP-conjugated Goat anti-Rabbit IgG(H + L) antibody was used to detect the antibody.

**For Research Use Only
IMMUNOLOGICAL SCIENCES**