

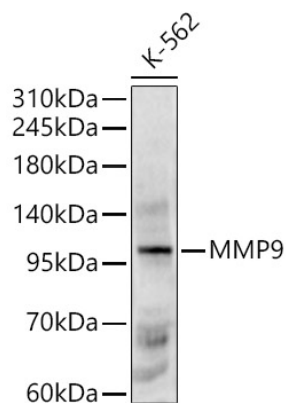


Product name:	MMP9 Rabbit Monoclonal Antibody
Cat number:	MAB0289
Conjugate:	Unconjugated
Size:	100 ug
Clone:	MP26
Concentration:	1 mg/ml
Host:	Rabbit
Isotype:	IgG
Immunogen:	Recombinant protein (or fragment). This information is considered to be commercially sensitive.
Reactivity:	Human, Mouse, Rat
Applications:	WB 1:500 - 1:5000 IHC-P 1:50 - 1:200 IF/ICC 1:50 - 1:200 ELISA Recommended starting concentration is 1 µg/mL. Please optimize the concentration based on your specific assay requirements.
Molecular Weight:	96 kDa
Purification:	Affinity purification
Form:	Liquid
Buffer:	PBS containing 50% glycerol, preserved with proclin300 or sodium azide (as specified on the Certificate of Analysis), pH 7.3.
Storage:	Store at -20°C. Avoid freeze / thaw cycles.
Synonyms:	GELB; CLG4B; MMP-9; MANDP2; MMP9
Source:	Rabbit
Background:	Proteins of the matrix metalloproteinase (MMP) family are involved in the breakdown of extracellular matrix in normal physiological processes, such as embryonic development, reproduction, and tissue remodeling, as well as in disease processes, such as arthritis and metastasis. Most MMP's are secreted as inactive proproteins which are activated when cleaved by extracellular proteinases. The enzyme encoded by this gene degrades type IV and V collagens. Studies in rhesus monkeys suggest that the enzyme is involved in IL-8-induced mobilization of hematopoietic progenitor cells from bone marrow, and murine studies suggest a role in tumor-associated tissue remodeling.

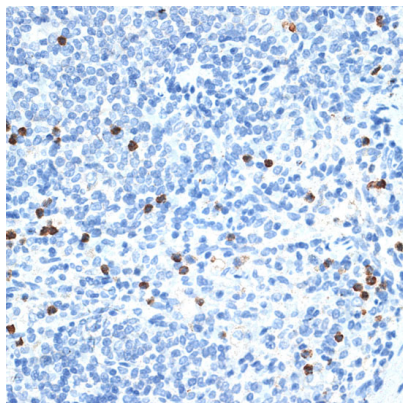
For Research Use Only

IMMUNOLOGICAL SCIENCES

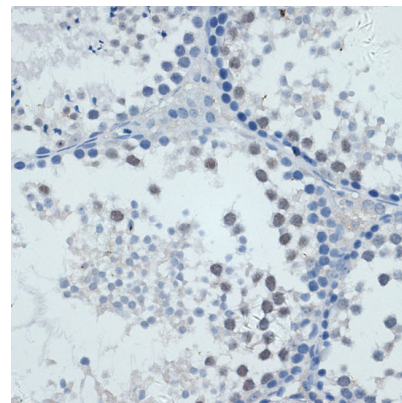
Web-site: <https://immunologicalsciences.com> - E-mail: info@immunologicalsciences.com



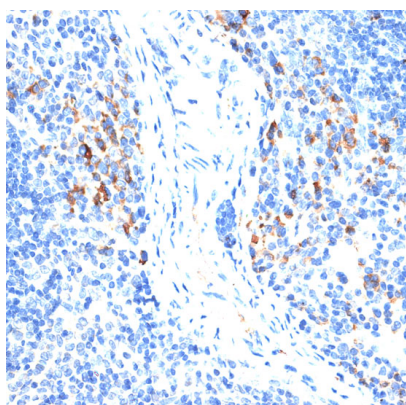
Western blot analysis of lysates from K-562 cells, using MMP9 Rabbit mAb at 1:600 dilution.



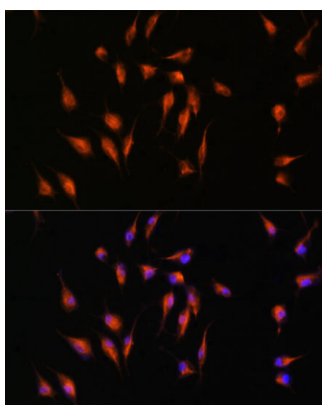
Immunohistochemistry analysis of paraffin-embedded Rat spleen using MMP9 Rabbit mAb at dilution of 1:100 (40x lens).



Immunohistochemistry analysis of paraffin-embedded Mouse testis using MMP9 Rabbit mAb at dilution of 1:100 (40x lens).



Immunohistochemistry analysis of paraffin-embedded Mouse spleen using MMP9 Rabbit mAb at dilution of 1:100 (40x lens).



Immunofluorescence analysis of L929 cells using MMP9 Rabbit mAb at dilution of 1:100.

**For Research Use Only
IMMUNOLOGICAL SCIENCES**