

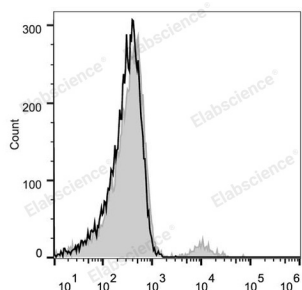


---

<b>Product name:</b>	PE Anti-Human CD20 Antibody[BCA/B20]
<b>Cat number:</b>	MAB1045D
<b>Conjugate:</b>	PE
<b>Conjugation Information:</b>	PE is designed to be excited by the Blue (488 nm), Green (532 nm) and Yellow-Green (561 nm) lasers and detected using an optical filter centered near 575 nm (e.g., a 585/42 nm bandpass filter).
<b>Size:</b>	100 tests
<b>Clone:</b>	BCA/B20
<b>Host:</b>	Mouse
<b>Isotype:</b>	Mouse IgG2a, $\kappa$
<b>Reactivity:</b>	Human
<b>Applications:</b>	FCM Each lot of this antibody is quality control tested by flow cytometric analysis. The amount of the reagent is suggested to be used 5 $\mu$ L of antibody per test (million cells in 100 $\mu$ L staining volume or per 100 $\mu$ L of whole blood). Please check your vial before the experiment. Since applications vary, the appropriate dilutions must be determined for individual use.
<b>Molecular Weight:</b>	33-37 kD
<b>Form:</b>	Liquid
<b>Buffer:</b>	Phosphate buffered solution, pH 7.2, containing 0.09% stabilizer.
<b>Storage:</b>	Keep as concentrated solution. This product can be stored at 2-8°C for 24 months. Please protected from prolonged exposure to light and do not freeze.
<b>Synonyms:</b>	B-lymphocyte antigen CD20;B-lymphocyte surface antigen B1;Bp35;CD20;Leukocyte surface antigen Leu-16;MS4A1;Membrane-spanning 4-domains subfamily A member 1
<b>Source:</b>	Mouse
<b>Background:</b>	CD20 is a 33-37 kD, four transmembrane spanning protein, also known as B1 and Bp35. CD20 is expressed on pre-B-cells, resting and activated B cells (not plasma cells), some follicular dendritic cells, and at low levels on a T cell subset. CD20 is heavily phosphorylated on activated B cells and malignant B cells. Homo-oligomeric complexes of CD20 are thought to form Ca <sup>2+</sup> conductive ion channels in the plasma membrane of B cells. The CD20 molecule is involved in B-cell activation and is associated with various Src family kinases (Lyn, Lck, Fyn). It exists in a complex with MHC class I and II, CD53, CD81, and CD82.

**For Research Use Only**

**IMMUNOLOGICAL SCIENCES**



Human peripheral blood lymphocytes are stained with PE Anti-Human CD20 Antibody (filled gray histogram). Unstained lymphocytes (empty black histogram) are used as control.

**For Research Use Only**  
**IMMUNOLOGICAL SCIENCES**