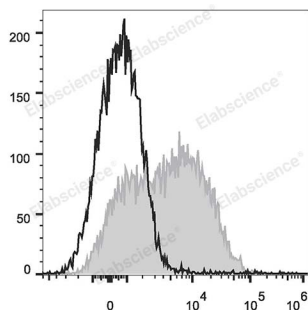


---

<b>Product name:</b>	PE/Cyanine7 Anti-Human CD38 Antibody[HIT2]
<b>Cat number:</b>	MAB1058H
<b>Conjugate:</b>	PE/Cyanine7
<b>Conjugation Information:</b>	PE/Cyanine7 is designed to be excited by the Blue (488 nm), Green (532 nm) and yellow-green (561 nm) lasers and detected using an optical filter centered near 775 nm (e.g., a 780/60 nm bandpass filter).
<b>Size:</b>	100 tests
<b>Clone:</b>	HIT2
<b>Host:</b>	Mouse
<b>Isotype:</b>	Mouse IgG1, $\kappa$
<b>Reactivity:</b>	Human
<b>Applications:</b>	FCM Each lot of this antibody is quality control tested by flow cytometric analysis. The amount of the reagent is suggested to be used 5 $\mu$ L of antibody per test (million cells in 100 $\mu$ L staining volume or per 100 $\mu$ L of whole blood). Please check your vial before the experiment. Since applications vary, the appropriate dilutions must be determined for individual use.
<b>Molecular Weight:</b>	45 kD
<b>Form:</b>	Liquid
<b>Buffer:</b>	Phosphate buffered solution, pH 7.2, containing 0.09% stabilizer.
<b>Storage:</b>	Keep as concentrated solution. This product can be stored at 2-8°C for 24 months. Please protected from prolonged exposure to light and do not freeze.
<b>Synonyms:</b>	2'-phospho-ADP-ribosyl cyclase;2'-phospho-cyclic-ADP-ribose transferase;ADP-ribosyl cyclase 1;ADP-ribosyl cyclase/cyclic ADP-ribose hydrolase 1;ADPRC 1;CD38;Cyclic ADP-ribose hydrolase 1;T10;cADPr hydrolase 1
<b>Source:</b>	Mouse
<b>Background:</b>	CD38 is a 45 kD type II transmembrane glycoprotein also known as T10. It is an ADP-ribosyl hydrolase expressed at variable levels on hematopoietic cells and in some non-hematopoietic tissues (such as brain, muscles, and kidney). In humans, it is expressed at high levels on plasma cells and activated T and B cells. By functioning as both a cyclase and a hydrolase, CD38 mediates lymphocyte activation, adhesion, and the metabolism of cADPR and NAADP. CD31 is the ligand of CD38.

**For Research Use Only**

**IMMUNOLOGICAL SCIENCES**



Human peripheral blood lymphocytes are stained with PE/Cyanine7 Anti-Human CD38 Antibody (filled gray histogram) or Mouse IgG1 Isotype Control PE/Cyanine7 (empty black histogram).

**For Research Use Only**  
**IMMUNOLOGICAL SCIENCES**